

Datasheet for ABIN928876

**anti-PDE4D antibody (N-Term)**[Go to Product page](#)**1** Image

## Overview

|                      |                                      |
|----------------------|--------------------------------------|
| Quantity:            | 100 µL                               |
| Target:              | PDE4D                                |
| Binding Specificity: | N-Term                               |
| Reactivity:          | Human, Mouse                         |
| Host:                | Rabbit                               |
| Clonality:           | Polyclonal                           |
| Conjugate:           | This PDE4D antibody is un-conjugated |
| Application:         | Western Blotting (WB)                |

## Product Details

|                   |  |
|-------------------|--|
| Immunogen:        | Pde4 d antibody was raised in rabbit using the N terminal of Pde4 as the immunogen |
| Cross-Reactivity: | Mouse (Murine)   |
| Purification:     | Purified   |

## Target Details

|                   |   |
|-------------------|---|
| Target:           | PDE4D   |
| Alternative Name: | Pde4d ( <a href="#">PDE4D Products</a> )  |
| Background:       | Pde4d hydrolyzes the second messenger cAMP, which is a key regulator of many important physiological processes. Synonyms: Polyclonal Pde4d antibody, Anti-Pde4d antibody, phosphodiesterase 4D, cAMP specific antibody, 9630011N22Rik antibody, Dpde3 antibody. |

## Target Details

---

Pathways: [Cellular Response to Molecule of Bacterial Origin](#), [cAMP Metabolic Process](#), [Myometrial Relaxation and Contraction](#), [Regulation of G-Protein Coupled Receptor Protein Signaling](#)

## Application Details

---

Application Notes: WB: 0.2-1 µg/mL  
Optimal conditions should be determined by the investigator.

Comment: Pde4d Blocking Peptide, catalog no. 33R-7069, is also available for use as a blocking control in assays to test for specificity of this Pde4d antibody

Restrictions: For Research Use only

## Handling

---

Format: Lyophilized

Concentration: Lot specific

Buffer: Lyophilized powder. Add 50 µL of distilled water. Final antibody concentration is 1 mg/mL in PBS buffer.

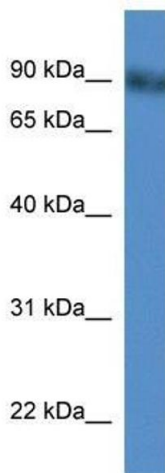
Handling Advice: Avoid repeated freeze/thaw cycles.

Storage: 4 °C/-20 °C

Storage Comment: Store at 4 °C, following reconstitution, aliquot and store at -20 °C.

## Images

---



### Western Blotting

**Image 1.** Western Blot showing Pde4d antibody used at a concentration of 1-2 ug/ml to detect its target protein.