

Datasheet for ABIN928883  
**anti-PPP2R5E antibody (N-Term)**



[Go to Product page](#)

1 Image

## Overview

Quantity:	100 µL
Target:	PPP2R5E
Binding Specificity:	N-Term
Reactivity:	Mouse, Human
Host:	Rabbit
Clonality:	Polyclonal
Conjugate:	This PPP2R5E antibody is un-conjugated
Application:	Western Blotting (WB)

## Product Details

Immunogen:	Ppp2 r2 antibody was raised in rabbit using the N terminal of Ppp2 2 as the immunogen
Cross-Reactivity:	Mouse (Murine)
Purification:	Purified

## Target Details

Target:	PPP2R5E
Alternative Name:	Ppp2r5e ( <a href="#">PPP2R5E Products</a> )
Background:	The B regulatory subunit might modulate substrate selectivity and catalytic activity, and also might direct the localization of the catalytic enzyme to a particular subcellular compartment. Ppp2r5e interacts with cyclin G in vitro. Synonyms: Polyclonal Ppp2r5e antibody, Anti-Ppp2r5e antibody, protein phosphatase 2, regulatory subunit B, B56, epsilon isoform antibody,

## Target Details

4633401M22Rik antibody, AI449017 antibody, B56beta antibody.

Pathways: [PI3K-Akt Signaling](#)

## Application Details

Application Notes: Optimal conditions should be determined by the investigator.

Comment: Ppp2r5e Blocking Peptide, catalog no. 33R-8335, is also available for use as a blocking control in assays to test for specificity of this Ppp2r5e antibody

Restrictions: For Research Use only

## Handling

Format: Lyophilized

Concentration: Lot specific

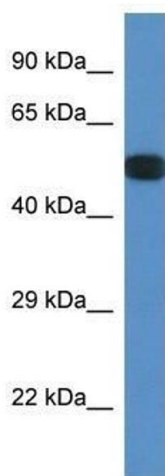
Buffer: Lyophilized powder. Add 50  $\mu$ L of distilled water. Final antibody concentration is 1 mg/mL in PBS buffer.

Handling Advice: Avoid repeated freeze/thaw cycles.

Storage: 4  $^{\circ}$ C/-20  $^{\circ}$ C

Storage Comment: Store at 4  $^{\circ}$ C, following reconstitution, aliquot and store at -20  $^{\circ}$ C.

## Images



### Western Blotting

**Image 1.** Western Blot showing Ppp2r5e antibody used at a concentration of 1.0  $\mu$ g/ml against Mouse Spleen Lysate