

Datasheet for ABIN928886
anti-PKC eta antibody (C-Term)



[Go to Product page](#)

1 Image

Overview

Quantity:	100 µL
Target:	PKC eta (PRKCH)
Binding Specificity:	C-Term
Reactivity:	Human, Mouse
Host:	Rabbit
Clonality:	Polyclonal
Conjugate:	This PKC eta antibody is un-conjugated
Application:	Western Blotting (WB)

Product Details

Immunogen:	Prkch antibody was raised in rabbit using the C terminal of Prkch as the immunogen
Cross-Reactivity:	Mouse (Murine)
Purification:	Purified

Target Details

Target:	PKC eta (PRKCH)
Alternative Name:	Prkch (PRKCH Products)
Background:	This is calcium-independent, phospholipid-dependent, serine- and threonine-specific enzyme. Synonyms: Polyclonal Prkch antibody, Anti-Prkch antibody, protein kinase C, eta antibody, Pkch antibody.

Target Details

Pathways: [Myometrial Relaxation and Contraction, Thromboxane A2 Receptor Signaling](#)

Application Details

Application Notes: Optimal conditions should be determined by the investigator.

Comment: Prkch Blocking Peptide, catalog no. 33R-9219, is also available for use as a blocking control in assays to test for specificity of this Prkch antibody

Restrictions: For Research Use only

Handling

Format: Lyophilized

Concentration: Lot specific

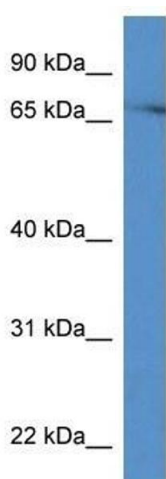
Buffer: Lyophilized powder. Add 50 μ L of distilled water. Final antibody concentration is 1 mg/mL in PBS buffer.

Handling Advice: Avoid repeated freeze/thaw cycles.

Storage: 4 $^{\circ}$ C/-20 $^{\circ}$ C

Storage Comment: Store at 4 $^{\circ}$ C, following reconstitution, aliquot and store at -20 $^{\circ}$ C.

Images



Western Blotting

Image 1. Western Blot showing Prkch antibody used at a concentration of 1.0 μ g/ml against Mouse Brain Lysate