

Datasheet for ABIN928897
anti-ASCC1 antibody (C-Term)



[Go to Product page](#)

1 Image

Overview

| | |
|----------------------|--------------------------------------|
| Quantity: | 100 µL |
| Target: | ASCC1 |
| Binding Specificity: | C-Term |
| Reactivity: | Human, Rat |
| Host: | Rabbit |
| Clonality: | Polyclonal |
| Conjugate: | This ASCC1 antibody is un-conjugated |
| Application: | Western Blotting (WB) |

Product Details

| | |
|-------------------|--|
| Immunogen: | Ascc1 antibody was raised in rabbit using the C terminal of Ascc1 as the immunogen |
| Cross-Reactivity: | Rat (Rattus) |
| Purification: | Purified |

Target Details

| | |
|-------------------|--|
| Target: | ASCC1 |
| Alternative Name: | Ascc1 (ASCC1 Products) |
| Background: | Ascc1 enhances NF-kappa-B, SRF and AP1 transactivation. Synonyms: Polyclonal Ascc1 antibody, Anti-Ascc1 antibody, activating signal cointegrator 1 complex subunit 1 antibody, Asc-1 antibody, CGI-18 antibody, MGC94577 antibody, Ascc1 antibody. |

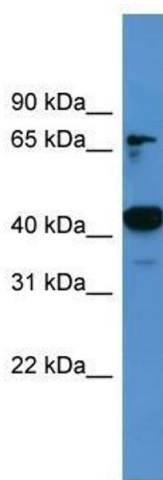
Application Details

| | |
|--------------------|--|
| Application Notes: | WB: 0.2-1 µg/mL Optimal conditions should be determined by the investigator. |
| Comment: | Ascc1 Blocking Peptide, catalog no. 33R-7731, is also available for use as a blocking control in assays to test for specificity of this Ascc1 antibody |
| Restrictions: | For Research Use only |

Handling

| | |
|------------------|--|
| Format: | Lyophilized |
| Concentration: | Lot specific |
| Buffer: | Lyophilized powder. Add 50 µL of distilled water. Final antibody concentration is 1 mg/mL in PBS buffer. |
| Handling Advice: | Avoid repeated freeze/thaw cycles. |
| Storage: | 4 °C/-20 °C |
| Storage Comment: | Store at 4 °C, following reconstitution, aliquot and store at -20 °C. |

Images



Western Blotting

Image 1. Ascc1 antibody used at 0.2-1 ug/ml to detect target protein.