

Datasheet for ABIN928904
anti-COMMD2 antibody (Middle Region)



[Go to Product page](#)

1 Image

Overview

Quantity:	100 µL
Target:	COMMD2
Binding Specificity:	Middle Region
Reactivity:	Human, Rat
Host:	Rabbit
Clonality:	Polyclonal
Conjugate:	This COMMD2 antibody is un-conjugated
Application:	Western Blotting (WB)

Product Details

Immunogen:	Commd2 antibody was raised in rabbit using the middle region of Commd2 as the immunogen
Cross-Reactivity:	Rat (Rattus)
Purification:	Purified

Target Details

Target:	COMMD2
Alternative Name:	Commd2 (COMMD2 Products)
Background:	Commd2 may down-regulate activation of NF-kappa-B. Synonyms: Polyclonal Commd2 antibody, Anti-Commd2 antibody, COMM domain containing 2 antibody, Commd2 antibody.

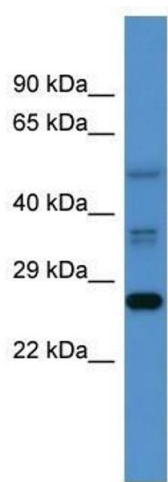
Application Details

Application Notes:	WB: 0.2-1 µg/mL Optimal conditions should be determined by the investigator.
Comment:	Commd2 Blocking Peptide, catalog no. 33R-8817, is also available for use as a blocking control in assays to test for specificity of this Commd2 antibody
Restrictions:	For Research Use only

Handling

Format:	Lyophilized
Concentration:	Lot specific
Buffer:	Lyophilized powder. Add 50 µL of distilled water. Final antibody concentration is 1 mg/mL in PBS buffer.
Handling Advice:	Avoid repeated freeze/thaw cycles.
Storage:	4 °C/-20 °C
Storage Comment:	Store at 4 °C, following reconstitution, aliquot and store at -20 °C.

Images



Western Blotting

Image 1. Western Blot showing Commd2 antibody used at a concentration of 1-2 µg/ml to detect its target protein.