

Datasheet for ABIN928910 **anti-DCDC2 antibody (N-Term)**



[Go to Product page](#)

1 Image

Overview

Quantity:	100 µL
Target:	DCDC2
Binding Specificity:	N-Term
Reactivity:	Human, Mouse
Host:	Rabbit
Clonality:	Polyclonal
Conjugate:	This DCDC2 antibody is un-conjugated
Application:	Western Blotting (WB)

Product Details

Immunogen:	Dcdc2 a antibody was raised in rabbit using the N terminal of Dcdc2 as the immunogen
Cross-Reactivity:	Mouse (Murine)
Purification:	Purified

Target Details

Target:	DCDC2
Alternative Name:	Dcdc2a (DCDC2 Products)
Background:	This gene encodes a member of the doublecortin family. The protein encoded by this gene contains two doublecortin domains. The doublecortin domain has been demonstrated to bind tubulin and enhance microtubule polymerization. Synonyms: Polyclonal Dcdc2a antibody, Anti-Dcdc2a antibody, doublecortin domain containing 2a antibody, Dcdc2 antibody, MGC54817

Target Details

antibody, RU2 antibody.

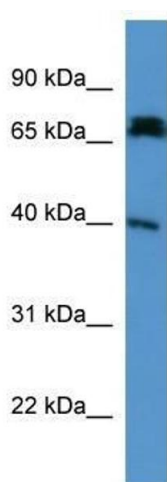
Application Details

Application Notes:	WB: 0.2-1 µg/mL Optimal conditions should be determined by the investigator.
Comment:	Dcdc2a Blocking Peptide, catalog no. 33R-7586, is also available for use as a blocking control in assays to test for specificity of this Dcdc2a antibody
Restrictions:	For Research Use only

Handling

Format:	Lyophilized
Concentration:	Lot specific
Buffer:	Lyophilized powder. Add 50 µL of distilled water. Final antibody concentration is 1 mg/mL in PBS buffer.
Handling Advice:	Avoid repeated freeze/thaw cycles.
Storage:	4 °C/-20 °C
Storage Comment:	Store at 4 °C, following reconstitution, aliquot and store at -20 °C.

Images



Western Blotting

Image 1. Dcdc2a antibody used at 0.2-1 ug/ml to detect target protein.