

Datasheet for ABIN928919  
**anti-SHC3 antibody (N-Term)**



[Go to Product page](#)

1 Image

## Overview

Quantity:	100 µL
Target:	SHC3
Binding Specificity:	N-Term
Reactivity:	Human, Mouse
Host:	Rabbit
Clonality:	Polyclonal
Conjugate:	This SHC3 antibody is un-conjugated
Application:	Western Blotting (WB)

## Product Details

Immunogen:	Shc3 antibody was raised in rabbit using the N terminal of Shc3 as the immunogen
Cross-Reactivity:	Mouse (Murine)
Purification:	Purified

## Target Details

Target:	SHC3
Alternative Name:	Shc3 ( <a href="#">SHC3 Products</a> )
Background:	Shc3 is a signaling adapter that couples activated growth factor receptors to signaling pathway in neurons. It is involved in the signal transduction pathways of neurotrophin-activated Trk receptors in cortical neurons. Synonyms: Polyclonal Shc3 antibody, Anti-Shc3 antibody, src homology 2 domain-containing transforming protein C3 antibody, MGC124163 antibody, N-Shc

## Target Details

antibody, Rai antibody, ShcC antibody.

Pathways: [RTK Signaling](#), [EGFR Signaling Pathway](#), [Neurotrophin Signaling Pathway](#)

## Application Details

Application Notes: Optimal conditions should be determined by the investigator.

Comment: Shc3 Blocking Peptide, catalog no. 33R-7355, is also available for use as a blocking control in assays to test for specificity of this Shc3 antibody

Restrictions: For Research Use only

## Handling

Format: Lyophilized

Concentration: Lot specific

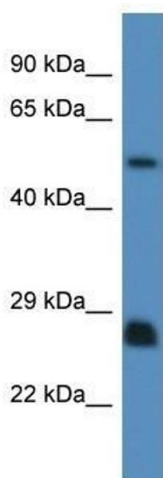
Buffer: Lyophilized powder. Add 50  $\mu$ L of distilled water. Final antibody concentration is 1 mg/mL in PBS buffer.

Handling Advice: Avoid repeated freeze/thaw cycles.

Storage: 4  $^{\circ}$ C/-20  $^{\circ}$ C

Storage Comment: Store at 4  $^{\circ}$ C, following reconstitution, aliquot and store at -20  $^{\circ}$ C.

## Images



### Western Blotting

**Image 1.** Western Blot showing Shc3 antibody used at a concentration of 1.0  $\mu$ g/ml against Mouse Spleen Lysate