

Datasheet for ABIN928923
anti-AHI1 antibody (C-Term)



[Go to Product page](#)

1 Image

Overview

| | |
|----------------------|-----------------------|
| Quantity: | 100 µL |
| Target: | AHI1 |
| Binding Specificity: | C-Term |
| Reactivity: | Human, Rat |
| Host: | Rabbit |
| Clonality: | Polyclonal |
| Application: | Western Blotting (WB) |

Product Details

| | |
|-------------------|--|
| Immunogen: | Ahi1 antibody was raised in rabbit using the C terminal of Ahi1 as the immunogen |
| Cross-Reactivity: | Rat (Rattus) |
| Purification: | Purified |

Target Details

| | |
|-------------------|---|
| Target: | AHI1 |
| Alternative Name: | Ahi1 (AHI1 Products) |
| Background: | Mutations in the human homolog are associated with Joubert syndrome, an autosomal recessive disorder resulting in severe mental retardation. Synonyms: Polyclonal Ahi1 antibody, Anti-Ahi1 antibody, Abelson helper integration site 1 antibody, Ahi-1 antibody, Ahi1 antibody. |

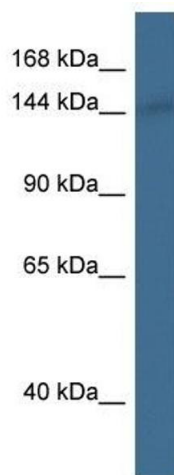
Application Details

| | |
|--------------------|--|
| Application Notes: | Optimal conditions should be determined by the investigator. |
| Comment: | Ahi1 Blocking Peptide, catalog no. 33R-4307, is also available for use as a blocking control in assays to test for specificity of this Ahi1 antibody |
| Restrictions: | For Research Use only |

Handling

| | |
|------------------|---|
| Format: | Lyophilized |
| Concentration: | Lot specific |
| Buffer: | Lyophilized powder. Add 50 μ L of distilled water. Final antibody concentration is 1 mg/mL in PBS buffer. |
| Handling Advice: | Avoid repeated freeze/thaw cycles. |
| Storage: | 4 °C/-20 °C |
| Storage Comment: | Store at 4 °C, following reconstitution, aliquot and store at -20 °C. |

Images



Western Blotting

Image 1. Western Blot showing Ahi1 antibody used at a concentration of 1.0 μ g/ml against Rat Lung Lysate