

Datasheet for ABIN928948  
**anti-TUBA8 antibody (N-Term)**



[Go to Product page](#)

1 Image

## Overview

Quantity:	100 µL
Target:	TUBA8
Binding Specificity:	N-Term
Reactivity:	Human, Mouse
Host:	Rabbit
Clonality:	Polyclonal
Conjugate:	This TUBA8 antibody is un-conjugated
Application:	Western Blotting (WB)

## Product Details

Immunogen:	Tuba8 antibody was raised in rabbit using the N terminal of Tuba8 as the immunogen
Cross-Reactivity:	Mouse (Murine)
Purification:	Purified

## Target Details

Target:	TUBA8
Alternative Name:	Tuba8 ( <a href="#">TUBA8 Products</a> )
Background:	Tubulin is the major constituent of microtubules. It binds two moles of GTP, one at an exchangeable site on the beta chain and one at a non-exchangeable site on the alpha-chain. Synonyms: Polyclonal Tuba8 antibody, Anti-Tuba8 antibody, tubulin, alpha 8 antibody.

## Target Details

Pathways: [Microtubule Dynamics](#)

## Application Details

Application Notes: Optimal conditions should be determined by the investigator.

Comment: Tuba8 Blocking Peptide, catalog no. 33R-1093, is also available for use as a blocking control in assays to test for specificity of this Tuba8 antibody

Restrictions: For Research Use only

## Handling

Format: Lyophilized

Concentration: Lot specific

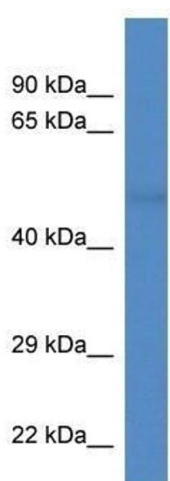
Buffer: Lyophilized powder. Add 50  $\mu$ L of distilled water. Final antibody concentration is 1 mg/mL in PBS buffer.

Handling Advice: Avoid repeated freeze/thaw cycles.

Storage: 4  $^{\circ}$ C/-20  $^{\circ}$ C

Storage Comment: Store at 4  $^{\circ}$ C, following reconstitution, aliquot and store at -20  $^{\circ}$ C.

## Images



### Western Blotting

**Image 1.** Western Blot showing Tuba8 antibody used at a concentration of 1.0  $\mu$ g/ml against Mouse Spleen Lysate