

Datasheet for ABIN928956
anti-LYRM4 antibody (Middle Region)



[Go to Product page](#)

1 Image

Overview

Quantity:	100 µL
Target:	LYRM4
Binding Specificity:	Middle Region
Reactivity:	Human, Mouse
Host:	Rabbit
Clonality:	Polyclonal
Conjugate:	This LYRM4 antibody is un-conjugated
Application:	Western Blotting (WB)

Product Details

Immunogen:	Lyrm4 antibody was raised in rabbit using the middle region of Lyrm4 as the immunogen
Cross-Reactivity:	Mouse (Murine)
Purification:	Purified

Target Details

Target:	LYRM4
Alternative Name:	Lyrm4 (LYRM4 Products)
Background:	Lyrm4 is required for nuclear and mitochondrial iron-sulfur protein biosynthesis. Synonyms: Polyclonal Lyrm4 antibody, Anti-Lyrm4 antibody, LYR motif containing 4 antibody, BC034664 antibody, Gm903 antibody, MGC38622 antibody.

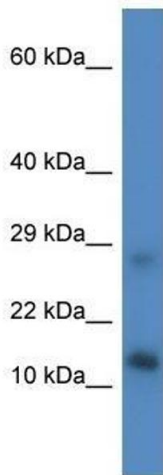
Application Details

Application Notes:	Optimal conditions should be determined by the investigator.
Comment:	Lym4 Blocking Peptide, catalog no. 33R-9786, is also available for use as a blocking control in assays to test for specificity of this Lym4 antibody
Restrictions:	For Research Use only

Handling

Format:	Lyophilized
Concentration:	Lot specific
Buffer:	Lyophilized powder. Add 50 μ L of distilled water. Final antibody concentration is 1 mg/mL in PBS buffer.
Handling Advice:	Avoid repeated freeze/thaw cycles.
Storage:	4 °C/-20 °C
Storage Comment:	Store at 4 °C, following reconstitution, aliquot and store at -20 °C.

Images



Western Blotting

Image 1. Western Blot showing Lym4 antibody used at a concentration of 1.0 μ g/ml against Mouse Liver Lysate