

Datasheet for ABIN928961
anti-MAGEE1 antibody (C-Term)



[Go to Product page](#)

1 Image

Overview

Quantity:	100 µL
Target:	MAGEE1
Binding Specificity:	C-Term
Reactivity:	Human, Mouse
Host:	Rabbit
Clonality:	Polyclonal
Application:	Western Blotting (WB)

Product Details

Immunogen:	MAGEE1 antibody was raised in rabbit using the C terminal of MAGEE1 as the immunogen
Cross-Reactivity:	Mouse (Murine)
Purification:	Purified

Target Details

Target:	MAGEE1
Alternative Name:	MAGEE1 (MAGEE1 Products)
Background:	The function of this protein remains unknown. Synonyms: Polyclonal Magee1 antibody, Anti-Magee1 antibody, melanoma antigen, family E, 1 antibody, A1847422 antibody, DAMAGE antibody, mMage-e1 antibody.
Pathways:	Synaptic Membrane

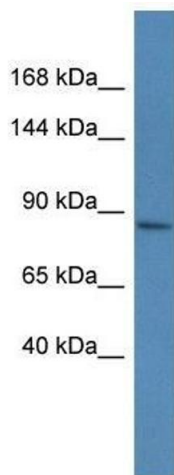
Application Details

Application Notes:	Optimal conditions should be determined by the investigator.
Comment:	MAGEE1 Blocking Peptide, catalog no. 33R-3524, is also available for use as a blocking control in assays to test for specificity of this MAGEE1 antibody
Restrictions:	For Research Use only

Handling

Format:	Lyophilized
Concentration:	Lot specific
Buffer:	Lyophilized powder. Add 50 μ L of distilled water. Final antibody concentration is 1 mg/mL in PBS buffer.
Handling Advice:	Avoid repeated freeze/thaw cycles.
Storage:	4 °C/-20 °C
Storage Comment:	Store at 4 °C, following reconstitution, aliquot and store at -20 °C.

Images



Western Blotting

Image 1. Western Blot showing Magee1 antibody used at a concentration of 1.0 ug/ml against Mouse Spleen Lysate