

Datasheet for ABIN928962  
**anti-Copine V antibody (N-Term)**



[Go to Product page](#)

1 Image

## Overview

Quantity:	100 µL
Target:	Copine V (CPNE5)
Binding Specificity:	N-Term
Reactivity:	Human, Mouse
Host:	Rabbit
Clonality:	Polyclonal
Application:	Western Blotting (WB)

## Product Details

Immunogen:	Cpne5 antibody was raised in rabbit using the N terminal of Cpne5 as the immunogen
Cross-Reactivity:	Mouse (Murine)
Purification:	Purified

## Target Details

Target:	Copine V (CPNE5)
Alternative Name:	Cpne5 ( <a href="#">CPNE5 Products</a> )
Background:	Calcium-dependent membrane-binding proteins may regulate molecular events at the interface of the cell membrane and cytoplasm. This gene is one of several genes that encodes a calcium-dependent protein containing two N-terminal type II C2 domains and an integrin A domain-like sequence in the C-terminus. Synonyms: Polyclonal Cpne5 antibody, Anti-Cpne5 antibody, copine V antibody, A830083G22Rik antibody, MGC47475 antibody.

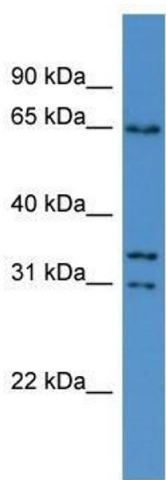
## Application Details

Application Notes:	WB: 0.2-1 µg/mL Optimal conditions should be determined by the investigator.
Comment:	Cpne5 Blocking Peptide, catalog no. 33R-8620, is also available for use as a blocking control in assays to test for specificity of this Cpne5 antibody
Restrictions:	For Research Use only

## Handling

Format:	Lyophilized
Concentration:	Lot specific
Buffer:	Lyophilized powder. Add 50 µL of distilled water. Final antibody concentration is 1 mg/mL in PBS buffer.
Handling Advice:	Avoid repeated freeze/thaw cycles.
Storage:	4 °C/-20 °C
Storage Comment:	Store at 4 °C, following reconstitution, aliquot and store at -20 °C.

## Images



### Western Blotting

**Image 1.** Cpne5 antibody used at 0.2-1 ug/ml to detect target protein.