

Datasheet for ABIN928965
anti-GBA3 antibody (N-Term)



[Go to Product page](#)

1 Image

Overview

| | |
|----------------------|-----------------------|
| Quantity: | 100 µL |
| Target: | GBA3 |
| Binding Specificity: | N-Term |
| Reactivity: | Human |
| Host: | Rabbit |
| Clonality: | Polyclonal |
| Application: | Western Blotting (WB) |

Product Details

| | |
|---------------|--|
| Immunogen: | GBA3 antibody was raised in rabbit using the N terminal of GBA3 as the immunogen |
| Purification: | Purified |

Target Details

| | |
|-------------------|--|
| Target: | GBA3 |
| Alternative Name: | GBA3 (GBA3 Products) |
| Background: | GBA3, or cytosolic beta-glucosidase, is a predominantly liver enzyme that efficiently hydrolyzes beta-D-glucoside and beta-D-galactoside, but not any known physiologic beta-glycoside, suggesting that it may be involved in detoxification of plant glycosides. GBA3 also has significant neutral glycosylceramidase activity, suggesting that it may be involved in a nonlysosomal catabolic pathway of glucosylceramide metabolism. Synonyms: Polyclonal GBA3 antibody, Anti-GBA3 antibody, glucosidase, beta, acid 3, cytosolic antibody, CBGL1 antibody, |

Target Details

GLUC antibody, KLrP antibody, MGC104276 antibody, MGC126878 antibody.

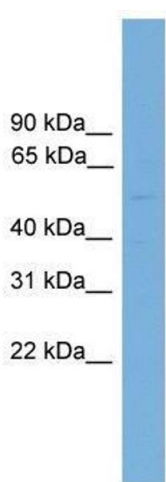
Application Details

| | |
|--------------------|--|
| Application Notes: | WB: 0.2-1 µg/mL Optimal conditions should be determined by the investigator. |
| Comment: | GBA3 Blocking Peptide, catalog no. 33R-5474, is also available for use as a blocking control in assays to test for specificity of this GBA3 antibody |
| Restrictions: | For Research Use only |

Handling

| | |
|------------------|--|
| Format: | Lyophilized |
| Concentration: | Lot specific |
| Buffer: | Lyophilized powder. Add 50 µL of distilled water. Final antibody concentration is 1 mg/mL in PBS buffer. |
| Handling Advice: | Avoid repeated freeze/thaw cycles. |
| Storage: | 4 °C/-20 °C |
| Storage Comment: | Store at 4 °C, following reconstitution, aliquot and store at -20 °C. |

Images



Western Blotting

Image 1. GBA3 antibody used at 0.2-1 ug/ml to detect target protein.