

Datasheet for ABIN928967
anti-PPP3CB antibody (C-Term)



[Go to Product page](#)

1 Image

Overview

Quantity:	100 µL
Target:	PPP3CB
Binding Specificity:	C-Term
Reactivity:	Human, Mouse
Host:	Rabbit
Clonality:	Polyclonal
Application:	Western Blotting (WB)

Product Details

Immunogen:	Ppp3 cb antibody was raised in rabbit using the C terminal of Ppp3 b as the immunogen
Cross-Reactivity:	Mouse (Murine)
Purification:	Purified

Target Details

Target:	PPP3CB
Alternative Name:	Ppp3cb (PPP3CB Products)
Background:	Ppp3cb is a Calcium-dependent, calmodulin-stimulated protein phosphatase. This subunit may have a role in the calmodulin activation of calcineurin. Synonyms: Polyclonal Ppp3cb antibody, Anti-Ppp3cb antibody, protein phosphatase 3, catalytic subunit, beta isoform antibody, 1110063J16Rik antibody, Calnb antibody, CnAbeta antibody.
Pathways:	RTK Signaling , WNT Signaling , Fc-epsilon Receptor Signaling Pathway , Positive Regulation of

Target Details

Peptide Hormone Secretion, Regulation of Leukocyte Mediated Immunity, VEGF Signaling, BCR Signaling

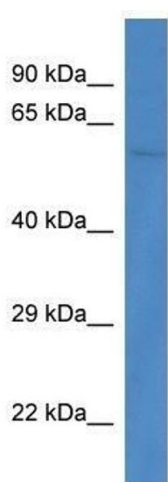
Application Details

Application Notes:	Optimal conditions should be determined by the investigator.
Comment:	Ppp3cb Blocking Peptide, catalog no. 33R-2750, is also available for use as a blocking control in assays to test for specificity of this Ppp3cb antibody
Restrictions:	For Research Use only

Handling

Format:	Lyophilized
Concentration:	Lot specific
Buffer:	Lyophilized powder. Add 50 μ L of distilled water. Final antibody concentration is 1 mg/mL in PBS buffer.
Handling Advice:	Avoid repeated freeze/thaw cycles.
Storage:	4 $^{\circ}$ C/-20 $^{\circ}$ C
Storage Comment:	Store at 4 $^{\circ}$ C, following reconstitution, aliquot and store at -20 $^{\circ}$ C.

Images



Western Blotting

Image 1. Western Blot showing Ppp3cb antibody used at a concentration of 1.0 μ g/ml against Mouse Heart Lysate