

Datasheet for ABIN928973
anti-XPNPEP3 antibody (N-Term)



[Go to Product page](#)

1 Image

Overview

Quantity:	100 µL
Target:	XPNPEP3
Binding Specificity:	N-Term
Reactivity:	Human
Host:	Rabbit
Clonality:	Polyclonal
Conjugate:	This XPNPEP3 antibody is un-conjugated
Application:	Western Blotting (WB)

Product Details

Immunogen:	XPNPEP3 antibody was raised in rabbit using the N terminal of XPNPEP3 as the immunogen
Purification:	Purified

Target Details

Target:	XPNPEP3
Alternative Name:	XPNPEP3 (XPNPEP3 Products)
Background:	The function of this protein remains unknown. Synonyms: Polyclonal XPNPEP3 antibody, Anti-XPNPEP3 antibody, X-prolyl aminopeptidase, aminopeptidase P 3, putative antibody, APP3 antibody.

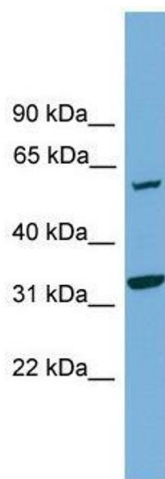
Application Details

Application Notes:	WB: 0.2-1 µg/mL Optimal conditions should be determined by the investigator.
Comment:	XPNPEP3 Blocking Peptide, catalog no. 33R-7418, is also available for use as a blocking control in assays to test for specificity of this XPNPEP3 antibody
Restrictions:	For Research Use only

Handling

Format:	Lyophilized
Concentration:	Lot specific
Buffer:	Lyophilized powder. Add 50 µL of distilled water. Final antibody concentration is 1 mg/mL in PBS buffer.
Handling Advice:	Avoid repeated freeze/thaw cycles.
Storage:	4 °C/-20 °C
Storage Comment:	Store at 4 °C, following reconstitution, aliquot and store at -20 °C.

Images



Western Blotting

Image 1. XPNPEP3 antibody used at 0.2-1 ug/ml to detect target protein.