

Datasheet for ABIN928975 **anti-BBS1 antibody (N-Term)**



[Go to Product page](#)

1 Image

Overview

Quantity:	100 µL
Target:	BBS1
Binding Specificity:	N-Term
Reactivity:	Human, Mouse
Host:	Rabbit
Clonality:	Polyclonal
Conjugate:	This BBS1 antibody is un-conjugated
Application:	Western Blotting (WB)

Product Details

Immunogen:	Bbs1 antibody was raised in rabbit using the N terminal of Bbs1 as the immunogen
Cross-Reactivity:	Mouse (Murine)
Purification:	Purified

Target Details

Target:	BBS1
Alternative Name:	Bbs1 (BBS1 Products)
Background:	Mutations in this gene have been observed in patients with the major form (type 1) of Bardet-Biedl syndrome. The encoded protein may play a role in eye, limb, cardiac and reproductive system development. Synonyms: Polyclonal Bbs1 antibody, Anti-Bbs1 antibody, Bardet-Biedl syndrome 1, human antibody, AI451249 antibody, D19Ertd609e antibody.

Target Details

Pathways: [Hedgehog Signaling](#)

Application Details

Application Notes: WB: 0.2-1 µg/mL
Optimal conditions should be determined by the investigator.

Comment: Bbs1 Blocking Peptide, catalog no. 33R-7002, is also available for use as a blocking control in assays to test for specificity of this Bbs1 antibody

Restrictions: For Research Use only

Handling

Format: Lyophilized

Concentration: Lot specific

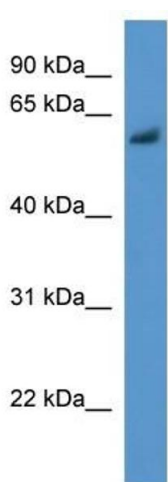
Buffer: Lyophilized powder. Add 50 µL of distilled water. Final antibody concentration is 1 mg/mL in PBS buffer.

Handling Advice: Avoid repeated freeze/thaw cycles.

Storage: 4 °C/-20 °C

Storage Comment: Store at 4 °C, following reconstitution, aliquot and store at -20 °C.

Images



Western Blotting

Image 1. Bbs1 antibody used at 0.2-1 ug/ml to detect target protein.