

Datasheet for ABIN928978
anti-PKIB antibody (Middle Region)



[Go to Product page](#)

1 Image

Overview

| | |
|----------------------|-------------------------------------|
| Quantity: | 100 µL |
| Target: | PKIB |
| Binding Specificity: | Middle Region |
| Reactivity: | Human, Rat |
| Host: | Rabbit |
| Clonality: | Polyclonal |
| Conjugate: | This PKIB antibody is un-conjugated |
| Application: | Western Blotting (WB) |

Product Details

| | |
|-------------------|---|
| Immunogen: | Pkib antibody was raised in rabbit using the middle region of Pkib as the immunogen |
| Cross-Reactivity: | Rat (Rattus) |
| Purification: | Purified |

Target Details

| | |
|-------------------|--|
| Target: | PKIB |
| Alternative Name: | Pkib (PKIB Products) |
| Background: | Pkib displays strong inhibition of the activity of cAMP-dependent protein kinase. Synonyms: Polyclonal Pkib antibody, Anti-Pkib antibody, protein kinase, cAMP-dependent, catalytic inhibitor beta antibody, PKINH antibody, Prkacn2 antibody, RATPKINH antibody, Pkib antibody. |

Target Details

Pathways: [Myometrial Relaxation and Contraction](#)

Application Details

Application Notes: Optimal conditions should be determined by the investigator.

Comment: Pkib Blocking Peptide, catalog no. 33R-9025, is also available for use as a blocking control in assays to test for specificity of this Pkib antibody

Restrictions: For Research Use only

Handling

Format: Lyophilized

Concentration: Lot specific

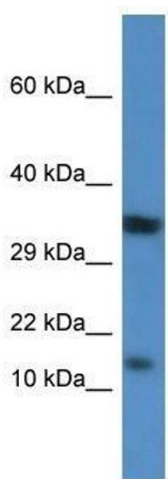
Buffer: Lyophilized powder. Add 50 μ L of distilled water. Final antibody concentration is 1 mg/mL in PBS buffer.

Handling Advice: Avoid repeated freeze/thaw cycles.

Storage: 4 °C/-20 °C

Storage Comment: Store at 4 °C, following reconstitution, aliquot and store at -20 °C.

Images



Western Blotting

Image 1. Western Blot showing Pkib antibody used at a concentration of 1.0 μ g/ml against Rat Kidney Lysate