

## Datasheet for ABIN928993 **anti-PDE8A antibody (C-Term)**



[Go to Product page](#)

### 1 Image

#### Overview

Quantity:	100 µL
Target:	PDE8A
Binding Specificity:	C-Term
Reactivity:	Human
Host:	Rabbit
Clonality:	Polyclonal
Conjugate:	This PDE8A antibody is un-conjugated
Application:	Western Blotting (WB)

#### Product Details

Immunogen:	PDE8 A antibody was raised in rabbit using the C terminal of PDE8 as the immunogen
Purification:	Purified

#### Target Details

Target:	PDE8A
Alternative Name:	PDE8A ( <a href="#">PDE8A Products</a> )
Background:	Phosphodiesterases (PDEs) regulate the intracellular levels of cAMP and cGMP. These cyclic nucleotides play an important role as second messengers in multiple physiologic processes, including regulation of vascular resistance, cardiac output, visceral motility, immune response, inflammation, neuroplasticity, vision, and reproduction. PDEs comprise a large superfamily of enzymes divided into 10 families. Different PDEs can be distinguished by their structure, tissue

## Target Details

---

expression, localization, substrate specificity, regulation, and sensitivity to PDE inhibitors. Diversity in structure and specificity of function make PDEs promising targets for the pharmacotherapy of diseases modulated by cyclic nucleotide signaling. Synonyms: Polyclonal PDE8A antibody, Anti-PDE8A antibody, phosphodiesterase 8A antibody, FLJ16150 antibody, HsT19550 antibody.

Pathways: [cAMP Metabolic Process](#)

## Application Details

---

Application Notes: WB: 0.2-1 µg/mL  
Optimal conditions should be determined by the investigator.

Comment: PDE8A Blocking Peptide, catalog no. 33R-8833, is also available for use as a blocking control in assays to test for specificity of this PDE8A antibody

Restrictions: For Research Use only

## Handling

---

Format: Lyophilized

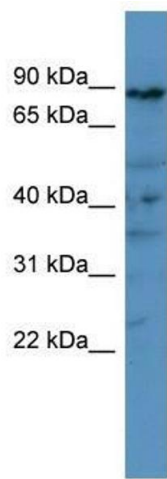
Concentration: Lot specific

Buffer: Lyophilized powder. Add 50 µL of distilled water. Final antibody concentration is 1 mg/mL in PBS buffer.

Handling Advice: Avoid repeated freeze/thaw cycles.

Storage: 4 °C/-20 °C

Storage Comment: Store at 4 °C, following reconstitution, aliquot and store at -20 °C.



### Western Blotting

**Image 1.** PDE8A antibody used at 0.2-1 ug/ml to detect target protein.