

Datasheet for ABIN928995
anti-EXOC1 antibody (N-Term)



[Go to Product page](#)

1 Image

Overview

Quantity:	100 µL
Target:	EXOC1
Binding Specificity:	N-Term
Reactivity:	Human
Host:	Rabbit
Clonality:	Polyclonal
Conjugate:	This EXOC1 antibody is un-conjugated
Application:	Western Blotting (WB)

Product Details

Immunogen:	EXOC1 antibody was raised in rabbit using the N terminal of EXOC1 as the immunogen
Purification:	Purified

Target Details

Target:	EXOC1
Alternative Name:	EXOC1 (EXOC1 Products)
Background:	The protein encoded by this gene is a component of the exocyst complex, a multiple protein complex essential for targeting exocytic vesicles to specific docking sites on the plasma membrane. Though best characterized in yeast, the component proteins and functions of the exocyst complex have been demonstrated to be highly conserved in higher eukaryotes. At least eight components of the exocyst complex, including this protein, are found to interact with the

Target Details

actin cytoskeletal remodeling and vesicle transport machinery. Alternatively spliced transcript variants encoding distinct isoforms have been described. Synonyms: Polyclonal EXOC1 antibody, Anti-EXOC1 antibody, exocyst complex component 1 antibody, BM-102 antibody, FLJ10893 antibody, SEC3 antibody, SEC3L1 antibody, SEC3P antibody.

Pathways: [Peptide Hormone Metabolism](#), [Synaptic Vesicle Exocytosis](#)

Application Details

Application Notes: WB: 0.2-1 µg/mL
Optimal conditions should be determined by the investigator.

Comment: EXOC1 Blocking Peptide, catalog no. 33R-6653, is also available for use as a blocking control in assays to test for specificity of this EXOC1 antibody

Restrictions: For Research Use only

Handling

Format: Lyophilized

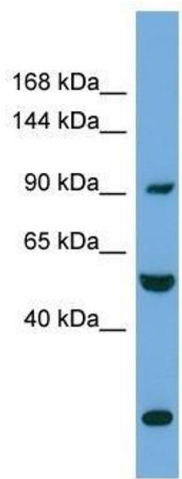
Concentration: Lot specific

Buffer: Lyophilized powder. Add 50 µL of distilled water. Final antibody concentration is 1 mg/mL in PBS buffer.

Handling Advice: Avoid repeated freeze/thaw cycles.

Storage: 4 °C/-20 °C

Storage Comment: Store at 4 °C, following reconstitution, aliquot and store at -20 °C.



Western Blotting

Image 1. Western Blot showing EXOC1 antibody used at a concentration of 1-2 ug/ml to detect its target protein.