

## Datasheet for ABIN928998 **anti-PPP2R2C antibody (N-Term)**



[Go to Product page](#)

### 1 Image

#### Overview

Quantity:	100 µL
Target:	PPP2R2C
Binding Specificity:	N-Term
Reactivity:	Human, Mouse
Host:	Rabbit
Clonality:	Polyclonal
Conjugate:	This PPP2R2C antibody is un-conjugated
Application:	Western Blotting (WB)

#### Product Details

Immunogen:	Ppp2 r2 antibody was raised in rabbit using the N terminal of Ppp2 2 as the immunogen
Cross-Reactivity:	Mouse (Murine)
Purification:	Purified

#### Target Details

Target:	PPP2R2C
Alternative Name:	Ppp2r2c ( <a href="#">PPP2R2C Products</a> )
Background:	The B regulatory subunit might modulate substrate selectivity and catalytic activity, and also might direct the localization of the catalytic enzyme to a particular subcellular compartment. Synonyms: Polyclonal Ppp2r2c antibody, Anti-Ppp2r2c antibody, protein phosphatase 2, formerly 2A, regulatory subunit B, PR 52, gamma isoform antibody, 6330548006Rik antibody,

## Target Details

IMYPNO antibody, IMYPNO1 antibody, PR52 antibody.

Pathways: [PI3K-Akt Signaling](#), [Hepatitis C](#)

## Application Details

Application Notes: WB: 0.2-1 µg/mL  
Optimal conditions should be determined by the investigator.

Comment: Ppp2r2c Blocking Peptide, catalog no. 33R-9839, is also available for use as a blocking control in assays to test for specificity of this Ppp2r2c antibody

Restrictions: For Research Use only

## Handling

Format: Lyophilized

Concentration: Lot specific

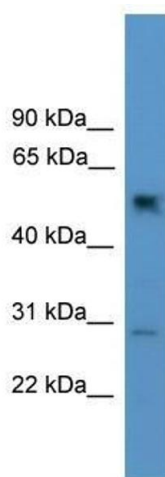
Buffer: Lyophilized powder. Add 50 µL of distilled water. Final antibody concentration is 1 mg/mL in PBS buffer.

Handling Advice: Avoid repeated freeze/thaw cycles.

Storage: 4 °C/-20 °C

Storage Comment: Store at 4 °C, following reconstitution, aliquot and store at -20 °C.

## Images



### Western Blotting

**Image 1.** Ppp2r2c antibody used at 0.2-1 ug/ml to detect target protein.