

Datasheet for ABIN929003 **anti-TH1-Like antibody (N-Term)**



[Go to Product page](#)

1 Image

Overview

Quantity:	100 µL
Target:	TH1-Like (TH1L)
Binding Specificity:	N-Term
Reactivity:	Human
Host:	Rabbit
Clonality:	Polyclonal
Conjugate:	This TH1-Like antibody is un-conjugated
Application:	Western Blotting (WB)

Product Details

Immunogen:	TH1 L antibody was raised in rabbit using the N terminal of TH1 as the immunogen
Purification:	Purified

Target Details

Target:	TH1-Like (TH1L)
Alternative Name:	TH1L (TH1L Products)
Background:	The NELF complex of proteins interacts with the DSIF protein complex to repress transcriptional elongation by RNA polymerase II. The protein encoded by this gene is an essential part of the NELF complex. Alternative translation initiation site usage results in the formation of two isoforms with different N-termini. Synonyms: Polyclonal TH1L antibody, Anti-TH1L antibody, TH1-like, Drosophila antibody, HSPC130 antibody, NELF-C antibody, NELF-D

Target Details

antibody, TH1 antibody.

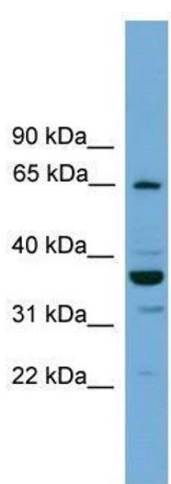
Application Details

Application Notes:	WB: 0.2-1 µg/mL Optimal conditions should be determined by the investigator.
Comment:	TH1L Blocking Peptide, catalog no. 33R-3227, is also available for use as a blocking control in assays to test for specificity of this TH1L antibody
Restrictions:	For Research Use only

Handling

Format:	Lyophilized
Concentration:	Lot specific
Buffer:	Lyophilized powder. Add 50 µL of distilled water. Final antibody concentration is 1 mg/mL in PBS buffer.
Handling Advice:	Avoid repeated freeze/thaw cycles.
Storage:	4 °C/-20 °C
Storage Comment:	Store at 4 °C, following reconstitution, aliquot and store at -20 °C.

Images



Western Blotting

Image 1. Western Blot showing TH1L antibody used at a concentration of 1-2 ug/ml to detect its target protein.