

Datasheet for ABIN929004
anti-THEG antibody (Middle Region)



[Go to Product page](#)

1 Image

Overview

Quantity:	100 µL
Target:	THEG
Binding Specificity:	Middle Region
Reactivity:	Human
Host:	Rabbit
Clonality:	Polyclonal
Conjugate:	This THEG antibody is un-conjugated
Application:	Western Blotting (WB)

Product Details

Immunogen:	THEG antibody was raised in rabbit using the middle region of THEG as the immunogen
Purification:	Purified

Target Details

Target:	THEG
Alternative Name:	THEG (THEG Products)
Background:	<p>This gene is specifically expressed in the nucleus of haploid male germ cells. It encodes a protein that may be involved in the regulation of germ cell nuclear functions. Alternatively spliced transcript variants encoding distinct isoforms have been reported. Synonyms: Polyclonal THEG antibody, Anti-THEG antibody, Theg homolog, mouse antibody, CT56 antibody, MGC26138 antibody.</p>

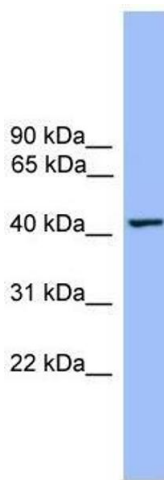
Application Details

Application Notes:	WB: 0.2-1 µg/mL Optimal conditions should be determined by the investigator.
Comment:	THEG Blocking Peptide, catalog no. 33R-5080, is also available for use as a blocking control in assays to test for specificity of this THEG antibody
Restrictions:	For Research Use only

Handling

Format:	Lyophilized
Concentration:	Lot specific
Buffer:	Lyophilized powder. Add 50 µL of distilled water. Final antibody concentration is 1 mg/mL in PBS buffer.
Handling Advice:	Avoid repeated freeze/thaw cycles.
Storage:	4 °C/-20 °C
Storage Comment:	Store at 4 °C, following reconstitution, aliquot and store at -20 °C.

Images



Western Blotting

Image 1. THEG antibody used at 0.2-1 ug/ml to detect target protein.