

Datasheet for ABIN929006
anti-LUC7L antibody (N-Term)



[Go to Product page](#)

1 Image

Overview

| | |
|----------------------|--------------------------------------|
| Quantity: | 100 µL |
| Target: | LUC7L |
| Binding Specificity: | N-Term |
| Reactivity: | Human |
| Host: | Rabbit |
| Clonality: | Polyclonal |
| Conjugate: | This LUC7L antibody is un-conjugated |
| Application: | Western Blotting (WB) |

Product Details

| | |
|---------------|--|
| Immunogen: | LUC7 L antibody was raised in rabbit using the N terminal of LUC7 as the immunogen |
| Purification: | Purified |

Target Details

| | |
|-------------------|--|
| Target: | LUC7L |
| Alternative Name: | LUC7L (LUC7L Products) |
| Background: | The LUC7L gene may represent a mammalian heterochromatic gene, encoding a putative RNA-binding protein similar to the yeast Luc7p subunit of the U1 snRNP splicing complex that is normally required for 5-prime splice site selection. Synonyms: Polyclonal LUC7L antibody, Anti-LUC7L antibody, LUC7-like, S. cerevisiae antibody, FLJ10231 antibody, LUC7-LIKE antibody, LUC7B1 antibody, SR+89 antibody. |

Target Details

Pathways: [Ribonucleoprotein Complex Subunit Organization](#)

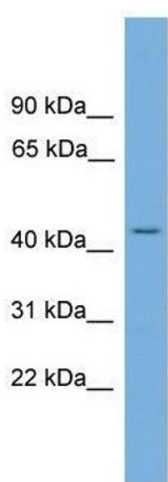
Application Details

| | |
|--------------------|---|
| Application Notes: | WB: 0.2-1 µg/mL Optimal conditions should be determined by the investigator. |
| Comment: | LUC7L Blocking Peptide, catalog no. 33R-10084, is also available for use as a blocking control in assays to test for specificity of this LUC7L antibody |
| Restrictions: | For Research Use only |

Handling

| | |
|------------------|--|
| Format: | Lyophilized |
| Concentration: | Lot specific |
| Buffer: | Lyophilized powder. Add 50 µL of distilled water. Final antibody concentration is 1 mg/mL in PBS buffer. |
| Handling Advice: | Avoid repeated freeze/thaw cycles. |
| Storage: | 4 °C/-20 °C |
| Storage Comment: | Store at 4 °C, following reconstitution, aliquot and store at -20 °C. |

Images



Western Blotting

Image 1. LUC7L antibody used at 0.2-1 ug/ml to detect target protein.