

## Datasheet for ABIN929025 **anti-IKZF2 antibody (Middle Region)**



[Go to Product page](#)

### 1 Image

#### Overview

Quantity:	100 µL
Target:	IKZF2
Binding Specificity:	Middle Region
Reactivity:	Human, Mouse, Rat, Dog, Chicken, Xenopus laevis
Host:	Rabbit
Clonality:	Polyclonal
Conjugate:	This IKZF2 antibody is un-conjugated
Application:	Western Blotting (WB)

#### Product Details

Immunogen:	IKZF2 antibody was raised in rabbit using the middle region of IKZF2 as the immunogen
Cross-Reactivity:	Mouse (Murine), Rat (Rattus), Dog (Canine), Chicken, Frog
Purification:	Purified

#### Target Details

Target:	IKZF2
Alternative Name:	<a href="#">IKZF2 (IKZF2 Products)</a>
Background:	IKZF2 is associated with Ikaros at centromeric heterochromatin. This gene encodes a member of the Ikaros family of zinc-finger proteins. Three members of this protein family (Ikaros, Aiolos and Helios) are hematopoietic-specific transcription factors involved in the regulation of lymphocyte development. This protein forms homo- or hetero-dimers with other Ikaros family

## Target Details

members, and is thought to function predominantly in early hematopoietic development.

Synonyms: Polyclonal IKZF2 antibody, Anti-IKZF2 antibody, IKAROS family zinc finger 2, Helios antibody, HELIOS antibody, MGC34330 antibody, ZNF1A2 antibody, ZNFN1A2 antibody.

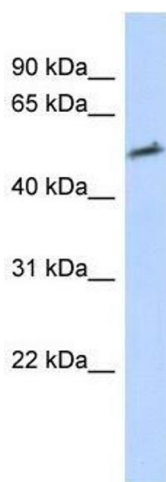
## Application Details

Application Notes:	WB: 0.2-1 µg/mL Optimal conditions should be determined by the investigator.
Comment:	IKZF2 Blocking Peptide, catalog no. 33R-2690, is also available for use as a blocking control in assays to test for specificity of this IKZF2 antibody
Restrictions:	For Research Use only

## Handling

Format:	Lyophilized
Concentration:	Lot specific
Buffer:	Lyophilized powder. Add 50 µL of distilled water. Final antibody concentration is 1 mg/mL in PBS buffer.
Handling Advice:	Avoid repeated freeze/thaw cycles.
Storage:	4 °C/-20 °C
Storage Comment:	Store at 4 °C, following reconstitution, aliquot and store at -20 °C.

## Images



### Western Blotting

**Image 1.** IKZF2 antibody used at 0.2-1 ug/ml to detect target protein.