

Datasheet for ABIN929026 **anti-ATF5 antibody (Middle Region)**



[Go to Product page](#)

1 Image

Overview

Quantity:	100 µL
Target:	ATF5
Binding Specificity:	Middle Region
Reactivity:	Human, Mouse, Rat, Cow, Zebrafish (Danio rerio), Xenopus laevis
Host:	Rabbit
Clonality:	Polyclonal
Conjugate:	This ATF5 antibody is un-conjugated
Application:	Western Blotting (WB)

Product Details

Immunogen:	ATF5 antibody was raised in rabbit using the middle region of ATF5 as the immunogen
Cross-Reactivity:	Mouse (Murine), Rat (Rattus), Cow (Bovine), Frog, Zebrafish (Brachydanio rerio)
Purification:	Purified

Target Details

Target:	ATF5
Alternative Name:	ATF5 (ATF5 Products)
Background:	ATF5 belongs to the bZIP family. It is transcriptional activator which binds the cAMP response element (CRE) (consensus: 5'-GTGACGT[AC][AG]-3'), a sequence present in many viral and cellular promoters and blocks the differentiation of neuroprogenitor cells into neurons. Its transcriptional activity is enhanced by CCND3 and slightly inhibited by CDK4. Loss of ATF5 is

Target Details

associated with hepatocellular carcinoma. Synonyms: Polyclonal ATF5 antibody, Anti-ATF5 antibody, activating transcription factor 5 antibody, ATFX antibody, FLJ34666 antibody, HMFN0395 antibody.

Pathways: [Myometrial Relaxation and Contraction](#)

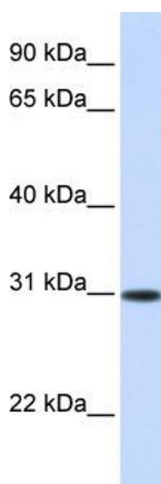
Application Details

Application Notes:	WB: 0.2-1 µg/mL Optimal conditions should be determined by the investigator.
Comment:	ATF5 Blocking Peptide, catalog no. 33R-5281, is also available for use as a blocking control in assays to test for specificity of this ATF5 antibody
Restrictions:	For Research Use only

Handling

Format:	Lyophilized
Concentration:	Lot specific
Buffer:	Lyophilized powder. Add 50 µL of distilled water. Final antibody concentration is 1 mg/mL in PBS buffer.
Handling Advice:	Avoid repeated freeze/thaw cycles.
Storage:	4 °C/-20 °C
Storage Comment:	Store at 4 °C, following reconstitution, aliquot and store at -20 °C.

Images



Western Blotting

Image 1. ATF5 antibody used at 0.2-1 ug/ml to detect target protein.