

Datasheet for ABIN929033

**anti-Metabotropic Glutamate Receptor 6 antibody (N-Term)**[Go to Product page](#)**1** Image

## Overview

Quantity:	100 µL
Target:	Metabotropic Glutamate Receptor 6 (GRM6)
Binding Specificity:	N-Term
Reactivity:	Human, Mouse, Rat, Dog, Rabbit, Chicken
Host:	Rabbit
Clonality:	Polyclonal
Conjugate:	This Metabotropic Glutamate Receptor 6 antibody is un-conjugated
Application:	Western Blotting (WB)

## Product Details

Immunogen:	GRM6 antibody was raised in rabbit using the N terminal of GRM6 as the immunogen
Cross-Reactivity:	Mouse (Murine), Rat (Rattus), Rabbit, Chicken, Dog (Canine)
Purification:	Purified

## Target Details

Target:	Metabotropic Glutamate Receptor 6 (GRM6)
Alternative Name:	GRM6 ( <a href="#">GRM6 Products</a> )
Background:	GRM6 encodes a receptor for glutamate. The activity of this receptor is mediated by a G-protein that inhibits adenylate cyclase activity. Synonyms: Polyclonal GRM6 antibody, Anti-GRM6 antibody, glutamate receptor, metabotropic 6 antibody, CSNB1B antibody, DKFZp686H1993 antibody, GPRC1F antibody, MGLUR6 antibody, mGlu6 antibody.

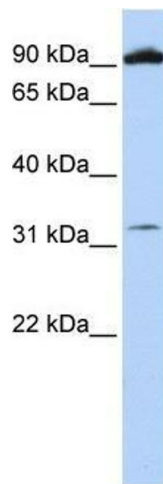
## Application Details

Application Notes:	WB: 0.2-1 µg/mL Optimal conditions should be determined by the investigator.
Comment:	GRM6 Blocking Peptide, catalog no. 33R-1198, is also available for use as a blocking control in assays to test for specificity of this GRM6 antibody
Restrictions:	For Research Use only

## Handling

Format:	Lyophilized
Concentration:	Lot specific
Buffer:	Lyophilized powder. Add 50 µL of distilled water. Final antibody concentration is 1 mg/mL in PBS buffer.
Handling Advice:	Avoid repeated freeze/thaw cycles.
Storage:	4 °C/-20 °C
Storage Comment:	Store at 4 °C, following reconstitution, aliquot and store at -20 °C.

## Images



### Western Blotting

**Image 1.** GRM6 antibody used at 0.2-1 ug/ml to detect target protein.