

Datasheet for ABIN929034
anti-GTF2B antibody (N-Term)



[Go to Product page](#)

1 Image

Overview

| | |
|----------------------|--------------------------------------|
| Quantity: | 100 µL |
| Target: | GTF2B |
| Binding Specificity: | N-Term |
| Reactivity: | Human, Rat |
| Host: | Rabbit |
| Clonality: | Polyclonal |
| Conjugate: | This GTF2B antibody is un-conjugated |
| Application: | Western Blotting (WB) |

Product Details

| | |
|-------------------|--|
| Immunogen: | Gtf2 b antibody was raised in rabbit using the N terminal of Gtf2 as the immunogen |
| Cross-Reactivity: | Rat (Rattus) |
| Purification: | Purified |

Target Details

| | |
|-------------------|--|
| Target: | GTF2B |
| Alternative Name: | Gtf2b (GTF2B Products) |
| Background: | Gtf2b is a putative subunit of RNA polymerase II. Synonyms: Polyclonal Gtf2b antibody, Anti-Gtf2b antibody, general transcription factor IIB antibody. |

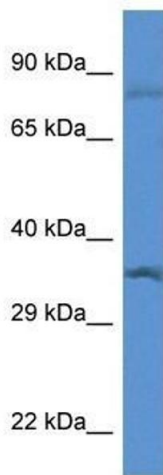
Application Details

| | |
|--------------------|--|
| Application Notes: | Optimal conditions should be determined by the investigator. |
| Comment: | Gtf2b Blocking Peptide, catalog no. 33R-3148, is also available for use as a blocking control in assays to test for specificity of this Gtf2b antibody |
| Restrictions: | For Research Use only |

Handling

| | |
|------------------|---|
| Format: | Lyophilized |
| Concentration: | Lot specific |
| Buffer: | Lyophilized powder. Add 50 μ L of distilled water. Final antibody concentration is 1 mg/mL in PBS buffer. |
| Handling Advice: | Avoid repeated freeze/thaw cycles. |
| Storage: | 4 °C/-20 °C |
| Storage Comment: | Store at 4 °C, following reconstitution, aliquot and store at -20 °C. |

Images



Western Blotting

Image 1. Western Blot showing Gtf2b antibody used at a concentration of 1.0 μ g/ml against Rat Lung Lysate