

Datasheet for ABIN929035 **anti-GTF2B antibody (C-Term)**



[Go to Product page](#)

1 Image

Overview

Quantity:	100 µL
Target:	GTF2B
Binding Specificity:	C-Term
Reactivity:	Human, Mouse, Rat, Dog, Zebrafish (Danio rerio), Cow, Xenopus laevis
Host:	Rabbit
Clonality:	Polyclonal
Conjugate:	This GTF2B antibody is un-conjugated
Application:	Western Blotting (WB)

Product Details

Immunogen:	GTF2 B antibody was raised in rabbit using the C terminal of GTF2 as the immunogen
Cross-Reactivity:	Mouse (Murine), Rat (Rattus), Dog (Canine), Cow (Bovine), Frog, Zebrafish (Brachydanio rerio)
Purification:	Purified

Target Details

Target:	GTF2B
Alternative Name:	GTF2B (GTF2B Products)
Background:	GTF2B is the general transcription factor IIB, one of the ubiquitous factors required for transcription initiation by RNA polymerase II. The protein localizes to the nucleus where it forms a complex (the DAB complex) with transcription factors IID and IIA. Transcription factor IIB serves as a bridge between IID, the factor which initially recognizes the promoter sequence, and

Target Details

RNA polymerase II. Synonyms: Polyclonal GTF2B antibody, Anti-GTF2B antibody, general transcription factor IIB antibody, TF2B antibody, TFIIIB antibody.

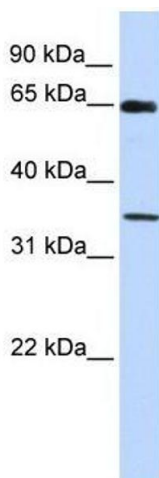
Application Details

Application Notes:	WB: 0.2-1 µg/mL Optimal conditions should be determined by the investigator.
Comment:	GTF2B Blocking Peptide, catalog no. 33R-8898, is also available for use as a blocking control in assays to test for specificity of this GTF2B antibody
Restrictions:	For Research Use only

Handling

Format:	Lyophilized
Concentration:	Lot specific
Buffer:	Lyophilized powder. Add 50 µL of distilled water. Final antibody concentration is 1 mg/mL in PBS buffer.
Handling Advice:	Avoid repeated freeze/thaw cycles.
Storage:	4 °C/-20 °C
Storage Comment:	Store at 4 °C, following reconstitution, aliquot and store at -20 °C.

Images



Western Blotting

Image 1. GTF2B antibody used at 0.2-1 µg/ml to detect target protein.