

Datasheet for ABIN929040
anti-TMF1 antibody (N-Term)



[Go to Product page](#)

1 Image

Overview

Quantity:	100 µL
Target:	TMF1
Binding Specificity:	N-Term
Reactivity:	Human, Rat, Mouse, Dog
Host:	Rabbit
Clonality:	Polyclonal
Conjugate:	This TMF1 antibody is un-conjugated
Application:	Western Blotting (WB)

Product Details

Immunogen:	TMF1 antibody was raised in rabbit using the N terminal of TMF1 as the immunogen
Cross-Reactivity:	Mouse (Murine), Rat (Rattus), Dog (Canine)
Purification:	Purified

Target Details

Target:	TMF1
Alternative Name:	TMF1 (TMF1 Products)
Background:	TMF1 binds the HIV-1 TATA element and inhibits transcriptional activation by the TATA-binding protein (TBP). Synonyms: Polyclonal TMF1 antibody, Anti-TMF1 antibody, TATA element modulatory factor 1 antibody, ARA160 antibody.

Target Details

Pathways: [Hormone Transport](#)

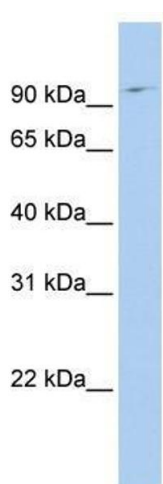
Application Details

Application Notes:	WB: 0.2-1 µg/mL Optimal conditions should be determined by the investigator.
Comment:	TMF1 Blocking Peptide, catalog no. 33R-9220, is also available for use as a blocking control in assays to test for specificity of this TMF1 antibody
Restrictions:	For Research Use only

Handling

Format:	Lyophilized
Concentration:	Lot specific
Buffer:	Lyophilized powder. Add 50 µL of distilled water. Final antibody concentration is 1 mg/mL in PBS buffer.
Handling Advice:	Avoid repeated freeze/thaw cycles.
Storage:	4 °C/-20 °C
Storage Comment:	Store at 4 °C, following reconstitution, aliquot and store at -20 °C.

Images



Western Blotting

Image 1. TMF1 antibody used at 0.2-1 ug/ml to detect target protein.