

Datasheet for ABIN929054

**anti-ASF1A antibody (N-Term)**[Go to Product page](#)**1** Image

## Overview

Quantity:	100 µL
Target:	ASF1A
Binding Specificity:	N-Term
Reactivity:	Human
Host:	Rabbit
Clonality:	Polyclonal
Conjugate:	This ASF1A antibody is un-conjugated
Application:	Western Blotting (WB)

## Product Details

Immunogen:	ASF1 A antibody was raised in rabbit using the N terminal of ASF1 as the immunogen
Purification:	Purified

## Target Details

Target:	ASF1A
Alternative Name:	ASF1A ( <a href="#">ASF1A Products</a> )
Background:	<p>This gene encodes a member of the H3/H4 family of histone chaperone proteins and is similar to the anti-silencing function-1 gene in yeast. The protein is a key component of a histone donor complex that functions in nucleosome assembly. It interacts with histones H3 and H4, and functions together with a chromatin assembly factor during DNA replication and repair.</p> <p>Synonyms: Polyclonal ASF1A antibody, Anti-ASF1A antibody, ASF1 anti-silencing function 1</p>

## Target Details

homolog A, *S. cerevisiae* antibody, CGI-98 antibody, CIA antibody, DKFZp547E2110 antibody, HSPC146 antibody.

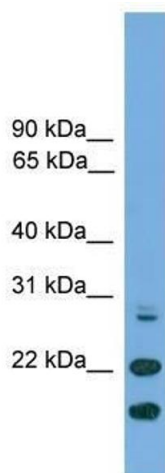
## Application Details

Application Notes:	WB: 0.2-1 µg/mL Optimal conditions should be determined by the investigator.
Comment:	ASF1A Blocking Peptide, catalog no. 33R-5680, is also available for use as a blocking control in assays to test for specificity of this ASF1A antibody
Restrictions:	For Research Use only

## Handling

Format:	Lyophilized
Concentration:	Lot specific
Buffer:	Lyophilized powder. Add 50 µL of distilled water. Final antibody concentration is 1 mg/mL in PBS buffer.
Handling Advice:	Avoid repeated freeze/thaw cycles.
Storage:	4 °C/-20 °C
Storage Comment:	Store at 4 °C, following reconstitution, aliquot and store at -20 °C.

## Images



### Western Blotting

**Image 1.** ASF1A antibody used at 0.2-1 ug/ml to detect target protein.