

Datasheet for ABIN929067

anti-Apolipoprotein L 5 antibody (C-Term)[Go to Product page](#)**1** Image

Overview

| | |
|----------------------|---|
| Quantity: | 100 µL |
| Target: | Apolipoprotein L 5 (APOL5) |
| Binding Specificity: | C-Term |
| Reactivity: | Human |
| Host: | Rabbit |
| Clonality: | Polyclonal |
| Conjugate: | This Apolipoprotein L 5 antibody is un-conjugated |
| Application: | Western Blotting (WB) |

Product Details

| | |
|---------------|--|
| Immunogen: | APOL5 antibody was raised in rabbit using the C terminal of APOL5 as the immunogen |
| Purification: | Purified |

Target Details

| | |
|-------------------|---|
| Target: | Apolipoprotein L 5 (APOL5) |
| Alternative Name: | APOL5 (APOL5 Products) |
| Background: | This gene is a member of the apolipoprotein L gene family. The encoded protein is found in the cytoplasm, where it may affect the movement of lipids or allow the binding of lipids to organelles. Synonyms: Polyclonal APOL5 antibody, Anti-APOL5 antibody, apolipoprotein L, 5 antibody, APOL-V antibody, APOLV antibody. |

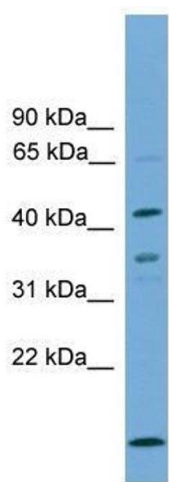
Application Details

| | |
|--------------------|--|
| Application Notes: | WB: 0.2-1 µg/mL Optimal conditions should be determined by the investigator. |
| Comment: | APOL5 Blocking Peptide, catalog no. 33R-7580, is also available for use as a blocking control in assays to test for specificity of this APOL5 antibody |
| Restrictions: | For Research Use only |

Handling

| | |
|------------------|--|
| Format: | Lyophilized |
| Concentration: | Lot specific |
| Buffer: | Lyophilized powder. Add 50 µL of distilled water. Final antibody concentration is 1 mg/mL in PBS buffer. |
| Handling Advice: | Avoid repeated freeze/thaw cycles. |
| Storage: | 4 °C/-20 °C |
| Storage Comment: | Store at 4 °C, following reconstitution, aliquot and store at -20 °C. |

Images



Western Blotting

Image 1. APOL5 antibody used at 0.2-1 ug/ml to detect target protein.