

Datasheet for ABIN929074
anti-SH3GLB1 antibody (N-Term)



[Go to Product page](#)

1 Image

Overview

Quantity:	100 µL
Target:	SH3GLB1
Binding Specificity:	N-Term
Reactivity:	Human, Mouse
Host:	Rabbit
Clonality:	Polyclonal
Conjugate:	This SH3GLB1 antibody is un-conjugated
Application:	Western Blotting (WB)

Product Details

Immunogen:	Sh3 glb1 antibody was raised in rabbit using the N terminal of Sh3 lb1 as the immunogen
Cross-Reactivity:	Mouse (Murine)
Purification:	Purified

Target Details

Target:	SH3GLB1
Alternative Name:	Sh3glb1 (SH3GLB1 Products)
Background:	Sh3glb1 may be required for normal outer mitochondrial membrane dynamics. It is required for coatomer-mediated retrograde transport in certain cells. It may recruit other proteins to membranes with high curvature. It may promote membrane fusion. Synonyms: Polyclonal Sh3glb1 antibody, Anti-Sh3glb1 antibody, SH3-domain GRB2-like B1, endophilin antibody,

Target Details

AA409932 antibody, AI314629 antibody, AU015566 antibody, Bif-1 antibody, KIAA0491 antibody, mKIAA0491 antibody.

Pathways: [Autophagy](#)

Application Details

Application Notes: Optimal conditions should be determined by the investigator.

Comment: Sh3glb1 Blocking Peptide, catalog no. 33R-4440, is also available for use as a blocking control in assays to test for specificity of this Sh3glb1 antibody

Restrictions: For Research Use only

Handling

Format: Lyophilized

Concentration: Lot specific

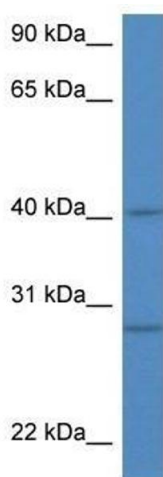
Buffer: Lyophilized powder. Add 50 μ L of distilled water. Final antibody concentration is 1 mg/mL in PBS buffer.

Handling Advice: Avoid repeated freeze/thaw cycles.

Storage: 4 °C/-20 °C

Storage Comment: Store at 4 °C, following reconstitution, aliquot and store at -20 °C.

Images



Western Blotting

Image 1. Western Blot showing Sh3glb1 antibody used at a concentration of 1.0 μ g/ml against Mouse Thymus Lysate