

Datasheet for ABIN929113
anti-LRRFIP2 antibody (N-Term)



[Go to Product page](#)

1 Image

Overview

Quantity:	100 µL
Target:	LRRFIP2
Binding Specificity:	N-Term
Reactivity:	Human
Host:	Rabbit
Clonality:	Polyclonal
Conjugate:	This LRRFIP2 antibody is un-conjugated
Application:	Western Blotting (WB)

Product Details

Immunogen:	LRRFIP2 antibody was raised in rabbit using the N terminal of LRRFIP2 as the immunogen
Purification:	Purified

Target Details

Target:	LRRFIP2
Alternative Name:	LRRFIP2 (LRRFIP2 Products)
Background:	The function of LRRFIP2 remains unknown. Synonyms: Polyclonal LRRFIP2 antibody, Anti-LRRFIP2 antibody, leucine rich repeat, in FLII interacting protein 2 antibody, DKFZp434H2035 antibody, FLJ20248 antibody, FLJ22683 antibody, FLJ58304 antibody, HUPI-2 antibody.

Application Details

Application Notes: WB: 0.2-1 µg/mL
Optimal conditions should be determined by the investigator.

Restrictions: For Research Use only

Handling

Format: Lyophilized

Concentration: Lot specific

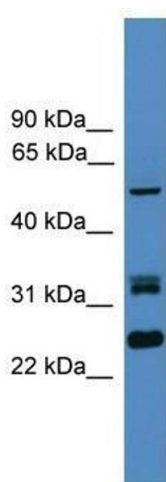
Buffer: Lyophilized powder. Add 50 µL of distilled water. Final antibody concentration is 1 mg/mL in PBS buffer.

Handling Advice: Avoid repeated freeze/thaw cycles.

Storage: 4 °C/-20 °C

Storage Comment: Store at 4 °C, following reconstitution, aliquot and store at -20 °C.

Images



Western Blotting

Image 1. LRRFIP2 antibody used at 0.2-1 ug/ml to detect target protein.