

Datasheet for ABIN929114
anti-NLRP5 antibody (N-Term)



[Go to Product page](#)

1 Image

Overview

Quantity:	100 µL
Target:	NLRP5
Binding Specificity:	N-Term
Reactivity:	Human
Host:	Rabbit
Clonality:	Polyclonal
Conjugate:	This NLRP5 antibody is un-conjugated
Application:	Western Blotting (WB)

Product Details

Immunogen:	NLRP5 antibody was raised in rabbit using the N terminal of NLRP5 as the immunogen
Purification:	Purified

Target Details

Target:	NLRP5
Alternative Name:	NLRP5 (NLRP5 Products)
Background:	The protein encoded by this gene belongs to the NALP protein family. Members of the NALP protein family typically contain a NACHT domain, a NACHT-associated domain (NAD), a C-terminal leucine-rich repeat (LRR) region, and an N-terminal pyrin domain (PYD). Expression of this gene is restricted to the oocyte. A mouse gene that encodes a maternal oocyte protein, similar to this encoded protein, is required for normal early embryogenesis. Synonyms:

Target Details

Polyclonal NLRP5 antibody, Anti-NLRP5 antibody, NLR family, pyrin domain containing 5 antibody, CLR19.8 antibody, MATER antibody, NALP5 antibody, PAN11 antibody, PYPAF8 antibody.

Pathways: [Inflammasome](#)

Application Details

Application Notes: WB: 0.2-1 µg/mL
Optimal conditions should be determined by the investigator.

Comment: NLRP5 Blocking Peptide, catalog no. 33R-4810, is also available for use as a blocking control in assays to test for specificity of this NLRP5 antibody

Restrictions: For Research Use only

Handling

Format: Lyophilized

Concentration: Lot specific

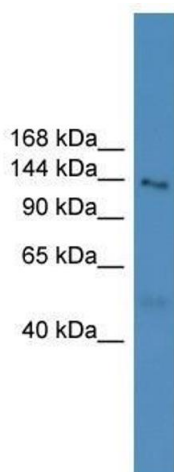
Buffer: Lyophilized powder. Add 50 µL of distilled water. Final antibody concentration is 1 mg/mL in PBS buffer.

Handling Advice: Avoid repeated freeze/thaw cycles.

Storage: 4 °C/-20 °C

Storage Comment: Store at 4 °C, following reconstitution, aliquot and store at -20 °C.

Images



Western Blotting

Image 1. NLRP5 antibody used at 0.2-1 ug/ml to detect target protein.