

## Datasheet for ABIN929117 **anti-TLR8 antibody (C-Term)**



[Go to Product page](#)

### 1 Image

#### Overview

Quantity:	100 µL
Target:	TLR8
Binding Specificity:	C-Term
Reactivity:	Human
Host:	Rabbit
Clonality:	Polyclonal
Conjugate:	This TLR8 antibody is un-conjugated
Application:	Western Blotting (WB)

#### Product Details

Immunogen:	TLR8 antibody was raised in rabbit using the C terminal of TLR8 as the immunogen
Purification:	Purified

#### Target Details

Target:	TLR8
Alternative Name:	TLR8 ( <a href="#">TLR8 Products</a> )
Background:	The protein encoded by this gene is a member of the Toll-like receptor (TLR) family which plays a fundamental role in pathogen recognition and activation of innate immunity. TLRs are highly conserved from Drosophila to humans and share structural and functional similarities. They recognize pathogen-associated molecular patterns (PAMPs) that are expressed on infectious agents, and mediate the production of cytokines necessary for the development of effective

## Target Details

---

immunity. The various TLRs exhibit different patterns of expression. This gene is predominantly expressed in lung and peripheral blood leukocytes, and lies in close proximity to another family member, TLR7, on chromosome X. Synonyms: Polyclonal TLR8 antibody, Anti-TLR8 antibody, toll-like receptor 8 antibody, CD288 antibody, MGC119599 antibody, MGC119600 antibody.

Pathways: [TLR Signaling, Activation of Innate immune Response, Toll-Like Receptors Cascades](#)

## Application Details

---

Application Notes: WB: 0.2-1 µg/mL  
Optimal conditions should be determined by the investigator.

Comment: TLR8 Blocking Peptide, catalog no. 33R-4922, is also available for use as a blocking control in assays to test for specificity of this TLR8 antibody

Restrictions: For Research Use only

## Handling

---

Format: Lyophilized

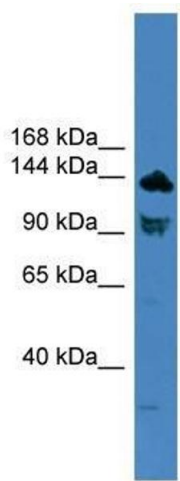
Concentration: Lot specific

Buffer: Lyophilized powder. Add 50 µL of distilled water. Final antibody concentration is 1 mg/mL in PBS buffer.

Handling Advice: Avoid repeated freeze/thaw cycles.

Storage: 4 °C/-20 °C

Storage Comment: Store at 4 °C, following reconstitution, aliquot and store at -20 °C.



### Western Blotting

**Image 1.** TLR8 antibody used at 0.2-1 ug/ml to detect target protein.