

Datasheet for ABIN929152
anti-TIMP2 antibody (N-Term)



[Go to Product page](#)

2 Images

Overview

Quantity:	100 µL
Target:	TIMP2
Binding Specificity:	N-Term
Reactivity:	Human
Host:	Rabbit
Clonality:	Polyclonal
Conjugate:	This TIMP2 antibody is un-conjugated
Application:	Western Blotting (WB)

Product Details

Immunogen:	TIMP2 antibody was raised in rabbit using the N terminal of TIMP2 as the immunogen
Purification:	Purified

Target Details

Target:	TIMP2
Alternative Name:	TIMP2 (TIMP2 Products)
Background:	This gene is a member of the TIMP gene family. The proteins encoded by this gene family are natural inhibitors of the matrix metalloproteinases, a group of peptidases involved in degradation of the extracellular matrix. In addition to an inhibitory role against metalloproteinases, the encoded protein has a unique role among TIMP family members in its ability to directly suppress the proliferation of endothelial cells. As a result, the encoded protein

Target Details

may be critical to the maintenance of tissue homeostasis by suppressing the proliferation of quiescent tissues in response to angiogenic factors, and by inhibiting protease activity in tissues undergoing remodelling of the extracellular matrix. Synonyms: Polyclonal TIMP2 antibody, Anti-TIMP2 antibody, TIMP metallopeptidase inhibitor 2 antibody, CSC-21K antibody.

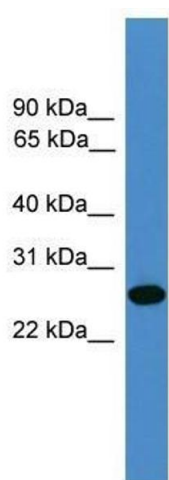
Pathways: [cAMP Metabolic Process](#)

Application Details

Application Notes:	WB: 0.2-1 µg/mL Optimal conditions should be determined by the investigator.
Comment:	TIMP2 Blocking Peptide, catalog no. 33R-6635, is also available for use as a blocking control in assays to test for specificity of this TIMP2 antibody
Restrictions:	For Research Use only

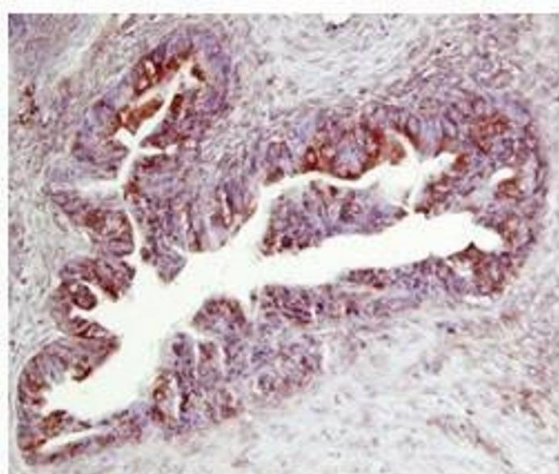
Handling

Format:	Lyophilized
Concentration:	Lot specific
Buffer:	Lyophilized powder. Add 50 µL of distilled water. Final antibody concentration is 1 mg/mL in PBS buffer.
Handling Advice:	Avoid repeated freeze/thaw cycles.
Storage:	4 °C/-20 °C
Storage Comment:	Store at 4 °C, following reconstitution, aliquot and store at -20 °C.



Western Blotting

Image 1. TIMP2 antibody used at 0.2-1 ug/ml to detect target protein.



Immunohistochemistry

Image 2. TIMP2 in human ovarian cancer was detected using HRP/AEC red color stain