

Datasheet for ABIN929157

anti-alpha 2 Antiplasmin antibody (N-Term)[Go to Product page](#)**1** Image

Overview

Quantity:	100 µL
Target:	alpha 2 Antiplasmin (SERPINF2)
Binding Specificity:	N-Term
Reactivity:	Human
Host:	Rabbit
Clonality:	Polyclonal
Conjugate:	This alpha 2 Antiplasmin antibody is un-conjugated
Application:	Western Blotting (WB)

Product Details

Immunogen:	SERPINF2 antibody was raised in rabbit using the N terminal of SERPINF2 as the immunogen
Purification:	Purified

Target Details

Target:	alpha 2 Antiplasmin (SERPINF2)
Alternative Name:	SERPINF2 (SERPINF2 Products)
Background:	<p>This gene encodes a member of the serpin family of serine protease inhibitors. The protein is a major inhibitor of plasmin, which degrades fibrin and various other proteins. Consequently, the proper function of this gene has a major role in regulating the blood clotting pathway.</p> <p>Mutations in this gene result in alpha-2-plasmin inhibitor deficiency, which is characterized by severe hemorrhagic diathesis. Synonyms: Polyclonal SERPINF2 antibody, Anti-SERPINF2</p>

Target Details

antibody, serpin peptidase inhibitor, clade F, alpha-2 antiplasmin, pigment epithelium derived factor, member 2 antibody, A2AP antibody, AAP antibody, ALPHA-2-PI antibody, API antibody, PLI antibody.

Pathways: [Regulation of Systemic Arterial Blood Pressure by Hormones](#)

Application Details

Application Notes: WB: 0.2-1 µg/mL
Optimal conditions should be determined by the investigator.

Comment: SERPINF2 Blocking Peptide, catalog no. 33R-1815, is also available for use as a blocking control in assays to test for specificity of this SERPINF2 antibody

Restrictions: For Research Use only

Handling

Format: Lyophilized

Concentration: Lot specific

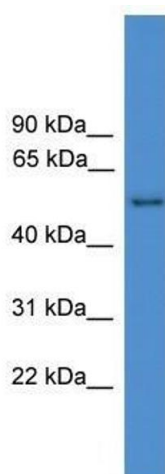
Buffer: Lyophilized powder. Add 50 µL of distilled water. Final antibody concentration is 1 mg/mL in PBS buffer.

Handling Advice: Avoid repeated freeze/thaw cycles.

Storage: 4 °C/-20 °C

Storage Comment: Store at 4 °C, following reconstitution, aliquot and store at -20 °C.

Images



Western Blotting

Image 1. Western Blot showing SERPINF2 antibody used at a concentration of 1-2 µg/ml to detect its target protein.