

Datasheet for ABIN929163 **anti-SLPI antibody (N-Term)**



[Go to Product page](#)

1 Image

Overview

Quantity:	100 µL
Target:	SLPI
Binding Specificity:	N-Term
Reactivity:	Human
Host:	Rabbit
Clonality:	Polyclonal
Conjugate:	This SLPI antibody is un-conjugated
Application:	Western Blotting (WB)

Product Details

Immunogen:	SLPI antibody was raised in rabbit using the N terminal of SLPI as the immunogen
Purification:	Purified

Target Details

Target:	SLPI
Alternative Name:	SLPI (SLPI Products)
Background:	<p>This gene encodes a secreted inhibitor which protects epithelial tissues from serine proteases. It is found in various secretions including seminal plasma, cervical mucus, and bronchial secretions, and has affinity for trypsin, leukocyte elastase, and cathepsin G. Its inhibitory effect contributes to the immune response by protecting epithelial surfaces from attack by endogenous proteolytic enzymes, the protein is also thought to have broad-spectrum anti-biotic</p>

Target Details

activity. Synonyms: Polyclonal SLPI antibody, Anti-SLPI antibody, secretory leukocyte peptidase inhibitor antibody, ALK1 antibody, ALP antibody, BLPI antibody, HUSI antibody, HUSI-I antibody, MPI antibody, WAP4 antibody, WFDC4 antibody.

Application Details

Application Notes: WB: 0.2-1 µg/mL
Optimal conditions should be determined by the investigator.

Restrictions: For Research Use only

Handling

Format: Lyophilized

Concentration: Lot specific

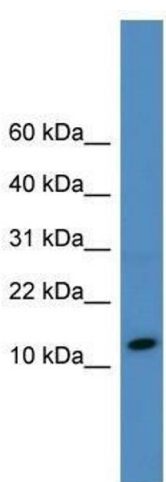
Buffer: Lyophilized powder. Add 50 µL of distilled water. Final antibody concentration is 1 mg/mL in PBS buffer.

Handling Advice: Avoid repeated freeze/thaw cycles.

Storage: 4 °C/-20 °C

Storage Comment: Store at 4 °C, following reconstitution, aliquot and store at -20 °C.

Images



Western Blotting

Image 1. Western Blot showing SLPI antibody used at a concentration of 1-2 ug/ml to detect its target protein.