

Datasheet for ABIN929173
anti-SERPINB7 antibody (N-Term)



[Go to Product page](#)

1 Image

Overview

Quantity:	100 µL
Target:	SERPINB7
Binding Specificity:	N-Term
Reactivity:	Human
Host:	Rabbit
Clonality:	Polyclonal
Conjugate:	This SERPINB7 antibody is un-conjugated
Application:	Western Blotting (WB)

Product Details

Immunogen:	SERPINB7 antibody was raised in rabbit using the N terminal of SERPINB7 as the immunogen
Purification:	Purified

Target Details

Target:	SERPINB7
Alternative Name:	SERPINB7 (SERPINB7 Products)
Background:	SERPINB7 might function as an inhibitor of Lys-specific proteases. SERPINB7 might influence the maturation of megakaryocytes via its action as a serpin. Synonyms: Polyclonal SERPINB7 antibody, Anti-SERPINB7 antibody, serpin peptidase inhibitor, clade B, ovalbumin, member 7 antibody, DKFZp686D06190 antibody, MEGSIN antibody, MGC120014 antibody, MGC120015 antibody.

Application Details

Application Notes: WB: 0.2-1 µg/mL
Optimal conditions should be determined by the investigator.

Restrictions: For Research Use only

Handling

Format: Lyophilized

Concentration: Lot specific

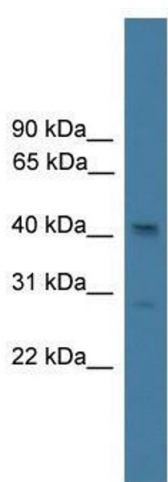
Buffer: Lyophilized powder. Add 50 µL of distilled water. Final antibody concentration is 1 mg/mL in PBS buffer.

Handling Advice: Avoid repeated freeze/thaw cycles.

Storage: 4 °C/-20 °C

Storage Comment: Store at 4 °C, following reconstitution, aliquot and store at -20 °C.

Images



Western Blotting

Image 1. SERPINB7 antibody used at 0.2-1 ug/ml to detect target protein.