

Datasheet for ABIN929177
anti-OTUD6A antibody (N-Term)



[Go to Product page](#)

1 Image

Overview

Quantity:	100 µL
Target:	OTUD6A
Binding Specificity:	N-Term
Reactivity:	Human
Host:	Rabbit
Clonality:	Polyclonal
Conjugate:	This OTUD6A antibody is un-conjugated
Application:	Western Blotting (WB)

Product Details

Immunogen:	OTUD6 A antibody was raised in rabbit using the N terminal of OTUD6 as the immunogen
Purification:	Purified

Target Details

Target:	OTUD6A
Alternative Name:	OTUD6A (OTUD6A Products)
Background:	Deubiquitinating enzymes (DUBs, see MIM 603478) are proteases that specifically cleave ubiquitin (MIM 191339) linkages, negating the action of ubiquitin ligases. DUBA2 belongs to a DUB subfamily characterized by an ovarian tumor (OTU) domain. Synonyms: Polyclonal OTUD6A antibody, Anti-OTUD6A antibody, OTU domain containing 6A antibody, DUBA2 antibody, FLJ25831 antibody, HSHIN6 antibody.

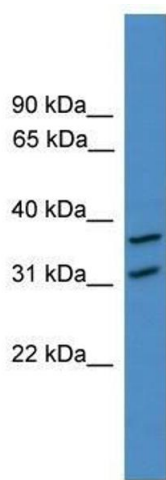
Application Details

Application Notes:	WB: 0.2-1 µg/mL Optimal conditions should be determined by the investigator.
Comment:	OTUD6A Blocking Peptide, catalog no. 33R-5887, is also available for use as a blocking control in assays to test for specificity of this OTUD6A antibody
Restrictions:	For Research Use only

Handling

Format:	Lyophilized
Concentration:	Lot specific
Buffer:	Lyophilized powder. Add 50 µL of distilled water. Final antibody concentration is 1 mg/mL in PBS buffer.
Handling Advice:	Avoid repeated freeze/thaw cycles.
Storage:	4 °C/-20 °C
Storage Comment:	Store at 4 °C, following reconstitution, aliquot and store at -20 °C.

Images



Western Blotting

Image 1. Western Blot showing OTUD6A antibody used at a concentration of 1-2 µg/ml to detect its target protein.