

Datasheet for ABIN929179

anti-USP17L2 antibody (Middle Region)[Go to Product page](#)**1** Image

Overview

Quantity:	100 µL
Target:	USP17L2
Binding Specificity:	Middle Region
Reactivity:	Human
Host:	Rabbit
Clonality:	Polyclonal
Conjugate:	This USP17L2 antibody is un-conjugated
Application:	Western Blotting (WB)

Product Details

Immunogen:	USP17 L2 antibody was raised in rabbit using the middle region of USP17 2 as the immunogen
Purification:	Purified

Target Details

Target:	USP17L2
Alternative Name:	USP17L2 (USP17L2 Products)
Background:	DUB3 is a member of the ubiquitin processing protease (UBP) subfamily of deubiquitinating enzymes. Synonyms: Polyclonal USP17L2 antibody, Anti-USP17L2 antibody, ubiquitin specific peptidase 17-like 2 antibody, DUB3 antibody.

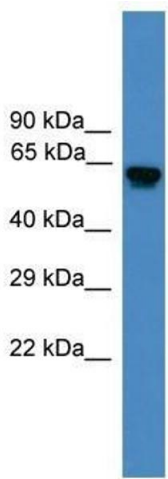
Application Details

Application Notes:	WB: 0.2-1 µg/mL Optimal conditions should be determined by the investigator.
Comment:	USP17L2 Blocking Peptide, catalog no. 33R-3136, is also available for use as a blocking control in assays to test for specificity of this USP17L2 antibody
Restrictions:	For Research Use only

Handling

Format:	Lyophilized
Concentration:	Lot specific
Buffer:	Lyophilized powder. Add 50 µL of distilled water. Final antibody concentration is 1 mg/mL in PBS buffer.
Handling Advice:	Avoid repeated freeze/thaw cycles.
Storage:	4 °C/-20 °C
Storage Comment:	Store at 4 °C, following reconstitution, aliquot and store at -20 °C.

Images



Western Blotting

Image 1. USP17L2 antibody used at 0.2-1 ug/ml to detect target protein.