

## Datasheet for ABIN929180 **anti-OTUB2 antibody (N-Term)**



[Go to Product page](#)

### 1 Image

#### Overview

Quantity:	100 µL
Target:	OTUB2
Binding Specificity:	N-Term
Reactivity:	Human
Host:	Rabbit
Clonality:	Polyclonal
Conjugate:	This OTUB2 antibody is un-conjugated
Application:	Western Blotting (WB)

#### Product Details

Immunogen:	OTUB2 antibody was raised in rabbit using the N terminal of OTUB2 as the immunogen
Purification:	Purified

#### Target Details

Target:	OTUB2
Alternative Name:	OTUB2 ( <a href="#">OTUB2 Products</a> )
Background:	<p>Otubains are deubiquitylating cysteine proteases that belong to the ovarian tumor (OTU) protein superfamily. Like other DUBs, otubains cleave proteins precisely at the ubiquitin-protein bond.</p> <p>Synonyms: Polyclonal OTUB2 antibody, Anti-OTUB2 antibody, OTU domain, ubiquitin aldehyde binding 2 antibody, C14orf137 antibody, FLJ21916 antibody, MGC3102 antibody, OTB2 antibody, OTU2 antibody.</p>

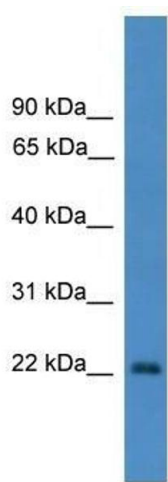
## Application Details

Application Notes:	WB: 0.2-1 µg/mL Optimal conditions should be determined by the investigator.
Comment:	OTUB2 Blocking Peptide, catalog no. 33R-1980, is also available for use as a blocking control in assays to test for specificity of this OTUB2 antibody
Restrictions:	For Research Use only

## Handling

Format:	Lyophilized
Concentration:	Lot specific
Buffer:	Lyophilized powder. Add 50 µL of distilled water. Final antibody concentration is 1 mg/mL in PBS buffer.
Handling Advice:	Avoid repeated freeze/thaw cycles.
Storage:	4 °C/-20 °C
Storage Comment:	Store at 4 °C, following reconstitution, aliquot and store at -20 °C.

## Images



### Western Blotting

**Image 1.** OTUB2 antibody used at 0.2-1 ug/ml to detect target protein.