

Datasheet for ABIN929237
anti-CPNE6 antibody (C-Term)



[Go to Product page](#)

1 Image

Overview

Quantity:	100 µL
Target:	CPNE6
Binding Specificity:	C-Term
Reactivity:	Human, Mouse
Host:	Rabbit
Clonality:	Polyclonal
Conjugate:	This CPNE6 antibody is un-conjugated
Application:	Western Blotting (WB)

Product Details

Immunogen:	Cpne6 antibody was raised in rabbit using the C terminal of Cpne6 as the immunogen
Cross-Reactivity:	Mouse (Murine)
Purification:	Purified

Target Details

Target:	CPNE6
Alternative Name:	Cpne6 (CPNE6 Products)
Background:	Calcium-dependent membrane-binding proteins may regulate molecular events at the interface of the cell membrane and cytoplasm. This gene is one of several genes that encodes a calcium-dependent protein containing two N-terminal type II C2 domains and an integrin A domain-like sequence in the C-terminus. Three transcript variants encoding two different isoforms have

Target Details

been found for this gene. Synonyms: Polyclonal Cpne6 antibody, Anti-Cpne6 antibody, copine VI antibody, AU067659 antibody, BB076446 antibody.

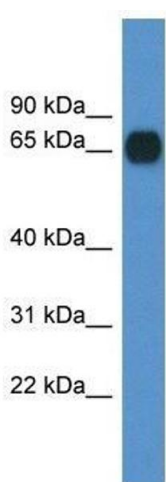
Application Details

Application Notes:	Optimal conditions should be determined by the investigator.
Comment:	Cpne6 Blocking Peptide, catalog no. 33R-10178, is also available for use as a blocking control in assays to test for specificity of this Cpne6 antibody
Restrictions:	For Research Use only

Handling

Format:	Lyophilized
Concentration:	Lot specific
Buffer:	Lyophilized powder. Add 50 μ L of distilled water. Final antibody concentration is 1 mg/mL in PBS buffer.
Handling Advice:	Avoid repeated freeze/thaw cycles.
Storage:	4 $^{\circ}$ C/-20 $^{\circ}$ C
Storage Comment:	Store at 4 $^{\circ}$ C, following reconstitution, aliquot and store at -20 $^{\circ}$ C.

Images



Western Blotting

Image 1. Western Blot showing Cpne6 antibody used at a concentration of 1.0 μ g/ml against Mouse Pancreas Lysate