

Datasheet for ABIN929238
anti-CLTA antibody (C-Term)



[Go to Product page](#)

1 Image

Overview

Quantity:	100 µL
Target:	CLTA
Binding Specificity:	C-Term
Reactivity:	Human
Host:	Rabbit
Clonality:	Polyclonal
Conjugate:	This CLTA antibody is un-conjugated
Application:	Western Blotting (WB)

Product Details

Immunogen:	CLTA antibody was raised in rabbit using the C terminal of CLTA as the immunogen
Purification:	Purified

Target Details

Target:	CLTA
Alternative Name:	CLTA (CLTA Products)
Background:	<p>Clathrin is a large, soluble protein composed of heavy and light chains. It functions as the main structural component of the lattice-type cytoplasmic face of coated pits and vesicles which entrap specific macromolecules during receptor-mediated endocytosis. This gene encodes one of two clathrin light chain proteins which are believed to function as regulatory elements.</p> <p>Synonyms: Polyclonal CLTA antibody, Anti-CLTA antibody, clathrin, light chain, Lca antibody,</p>

Target Details

LCA antibody.

Pathways: [EGFR Signaling Pathway](#), [Neurotrophin Signaling Pathway](#), [EGFR Downregulation](#)

Application Details

Application Notes: WB: 0.2-1 µg/mL
Optimal conditions should be determined by the investigator.

Comment: CLTA Blocking Peptide, catalog no. 33R-4345, is also available for use as a blocking control in assays to test for specificity of this CLTA antibody

Restrictions: For Research Use only

Handling

Format: Lyophilized

Concentration: Lot specific

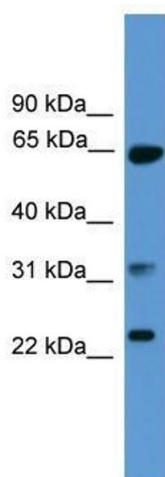
Buffer: Lyophilized powder. Add 50 µL of distilled water. Final antibody concentration is 1 mg/mL in PBS buffer.

Handling Advice: Avoid repeated freeze/thaw cycles.

Storage: 4 °C/-20 °C

Storage Comment: Store at 4 °C, following reconstitution, aliquot and store at -20 °C.

Images



Western Blotting

Image 1. CLTA antibody used at 0.2-1 ug/ml to detect target protein.