

Datasheet for ABIN929247
anti-SYT16 antibody (N-Term)



[Go to Product page](#)

1 Image

Overview

Quantity:	100 µL
Target:	SYT16
Binding Specificity:	N-Term
Reactivity:	Human
Host:	Rabbit
Clonality:	Polyclonal
Conjugate:	This SYT16 antibody is un-conjugated
Application:	Western Blotting (WB)

Product Details

Immunogen:	SYT16 antibody was raised in rabbit using the N terminal of SYT16 as the immunogen
Purification:	Purified

Target Details

Target:	SYT16
Alternative Name:	SYT16 (SYT16 Products)
Background:	SYT16 may be involved in the trafficking and exocytosis of secretory vesicles in non-neuronal tissues. Is Ca ²⁺ -independent. Synonyms: Polyclonal SYT16 antibody, Anti-SYT16 antibody, synaptotagmin XVI antibody, CHR14SYT antibody, SYT14L antibody, Strep14 antibody, syt14r antibody, yt14r antibody.

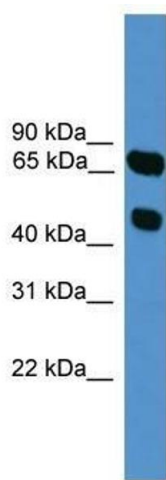
Application Details

Application Notes:	WB: 0.2-1 µg/mL Optimal conditions should be determined by the investigator.
Comment:	SYT16 Blocking Peptide, catalog no. 33R-2023, is also available for use as a blocking control in assays to test for specificity of this SYT16 antibody
Restrictions:	For Research Use only

Handling

Format:	Lyophilized
Concentration:	Lot specific
Buffer:	Lyophilized powder. Add 50 µL of distilled water. Final antibody concentration is 1 mg/mL in PBS buffer.
Handling Advice:	Avoid repeated freeze/thaw cycles.
Storage:	4 °C/-20 °C
Storage Comment:	Store at 4 °C, following reconstitution, aliquot and store at -20 °C.

Images



Western Blotting

Image 1. SYT16 antibody used at 0.2-1 ug/ml to detect target protein.