

Datasheet for ABIN929248
anti-SYT2 antibody (C-Term)



[Go to Product page](#)

1 Image

Overview

Quantity:	100 µL
Target:	SYT2
Binding Specificity:	C-Term
Reactivity:	Human
Host:	Rabbit
Clonality:	Polyclonal
Conjugate:	This SYT2 antibody is un-conjugated
Application:	Western Blotting (WB)

Product Details

Immunogen:	SYT2 antibody was raised in rabbit using the C terminal of SYT2 as the immunogen
Purification:	Purified

Target Details

Target:	SYT2
Alternative Name:	SYT2 (SYT2 Products)
Background:	Synaptotagmins, like SYT2, are integral membrane proteins of synaptic vesicles thought to serve as Ca(2+) sensors in the process of vesicular trafficking and exocytosis. Synonyms: Polyclonal SYT2 antibody, Anti-SYT2 antibody, synaptotagmin II antibody, FLJ42519 antibody, SytII antibody.
Pathways:	Synaptic Vesicle Exocytosis

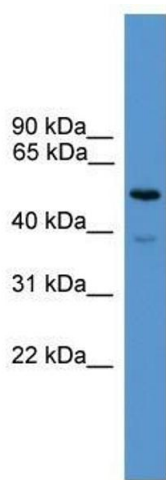
Application Details

Application Notes:	WB: 0.2-1 µg/mL Optimal conditions should be determined by the investigator.
Comment:	SYT2 Blocking Peptide, catalog no. 33R-1264, is also available for use as a blocking control in assays to test for specificity of this SYT2 antibody
Restrictions:	For Research Use only

Handling

Format:	Lyophilized
Concentration:	Lot specific
Buffer:	Lyophilized powder. Add 50 µL of distilled water. Final antibody concentration is 1 mg/mL in PBS buffer.
Handling Advice:	Avoid repeated freeze/thaw cycles.
Storage:	4 °C/-20 °C
Storage Comment:	Store at 4 °C, following reconstitution, aliquot and store at -20 °C.

Images



Western Blotting

Image 1. SYT2 antibody used at 0.2-1 ug/ml to detect target protein.