

Datasheet for ABIN929252  
**anti-SYT12 antibody (N-Term)**



[Go to Product page](#)

1 Image

## Overview

Quantity:	100 µL
Target:	SYT12
Binding Specificity:	N-Term
Reactivity:	Human
Host:	Rabbit
Clonality:	Polyclonal
Conjugate:	This SYT12 antibody is un-conjugated
Application:	Western Blotting (WB)

## Product Details

Immunogen:	SYT12 antibody was raised in rabbit using the N terminal of SYT12 as the immunogen
Purification:	Purified

## Target Details

Target:	SYT12
Alternative Name:	SYT12 ( <a href="#">SYT12 Products</a> )
Background:	This gene is a member of the synaptotagmin gene family and encodes a protein similar to other family members that mediate calcium-dependent regulation of membrane trafficking in synaptic transmission. Studies of the orthologous gene in rat have shown that the encoded protein selectively modulates spontaneous synaptic-vesicle exocytosis and may also be involved in regulating calcium independent secretion in nonneuronal cells. Alternative splicing

## Target Details

---

results in multiple transcript variants. The gene has previously been referred to as synaptotagmin XI but has been renamed synaptotagmin XII to be standard with mouse and rat official nomenclature. Synonyms: Polyclonal SYT12 antibody, Anti-SYT12 antibody, synaptotagmin XII antibody, SRG1 antibody, SYT11 antibody.

## Application Details

---

Application Notes:	Optimal conditions should be determined by the investigator.
Comment:	SYT12 Blocking Peptide, catalog no. 33R-1114, is also available for use as a blocking control in assays to test for specificity of this SYT12 antibody
Restrictions:	For Research Use only

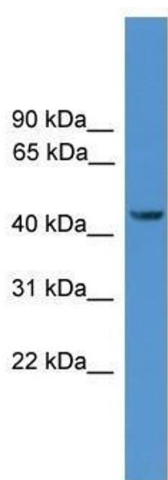
## Handling

---

Format:	Lyophilized
Concentration:	Lot specific
Buffer:	Lyophilized powder. Add 50 $\mu$ L of distilled water. Final antibody concentration is 1 mg/mL in PBS buffer.
Handling Advice:	Avoid repeated freeze/thaw cycles.
Storage:	4 °C/-20 °C
Storage Comment:	Store at 4 °C, following reconstitution, aliquot and store at -20 °C.

## Images

---



### Western Blotting

**Image 1.** Western Blot showing SYT12 antibody used at a concentration of 1.0  $\mu$ g/ml against PANC1 Cell Lysate