

Datasheet for ABIN929253  
**anti-ERC1 antibody (C-Term)**



[Go to Product page](#)

1 Image

## Overview

Quantity:	100 µL
Target:	ERC1
Binding Specificity:	C-Term
Reactivity:	Human
Host:	Rabbit
Clonality:	Polyclonal
Conjugate:	This ERC1 antibody is un-conjugated
Application:	Western Blotting (WB)

## Product Details

Immunogen:	ERC1 antibody was raised in rabbit using the C terminal of ERC1 as the immunogen
Purification:	Purified

## Target Details

Target:	ERC1
Alternative Name:	ERC1 ( <a href="#">ERC1 Products</a> )
Background:	The protein encoded by this gene is a member of a family of RIM-binding proteins. RIMs are active zone proteins that regulate neurotransmitter release. This gene has been found fused to the receptor-type tyrosine kinase gene RET by gene rearrangement due to the translocation t(10,12)(q11,p13). Multiple transcript variants encoding different isoforms have been found for this gene. Synonyms: Polyclonal ERC1 antibody, Anti-ERC1 antibody, ELKS/RAB6-

## Target Details

interacting/CAST family member 1 antibody, Cast2 antibody, ELKS antibody, FLJ31750 antibody, KIAA1081 antibody, MGC12974 antibody, RAB6IP2 antibody.

Pathways:

[SARS-CoV-2 Protein Interactome](#), [The Global Phosphorylation Landscape of SARS-CoV-2 Infection](#)

## Application Details

Application Notes:

WB: 0.2-1 µg/mL

Optimal conditions should be determined by the investigator.

Comment:

ERC1 Blocking Peptide, catalog no. 33R-4522, is also available for use as a blocking control in assays to test for specificity of this ERC1 antibody

Restrictions:

For Research Use only

## Handling

Format:

Lyophilized

Concentration:

Lot specific

Buffer:

Lyophilized powder. Add 50 µL of distilled water. Final antibody concentration is 1 mg/mL in PBS buffer.

Handling Advice:

Avoid repeated freeze/thaw cycles.

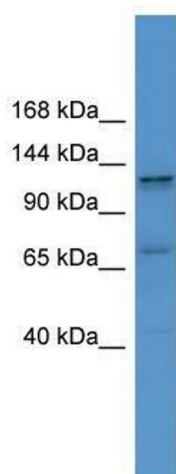
Storage:

4 °C/-20 °C

Storage Comment:

Store at 4 °C, following reconstitution, aliquot and store at -20 °C.

## Images



### Western Blotting

**Image 1.** Western Blot showing ERC1 antibody used at a concentration of 1-2 µg/ml to detect its target protein.