

Datasheet for ABIN929259
anti-GS28 antibody (C-Term)



[Go to Product page](#)

1 Image

Overview

Quantity:	100 µL
Target:	GS28 (GOSR1)
Binding Specificity:	C-Term
Reactivity:	Human
Host:	Rabbit
Clonality:	Polyclonal
Conjugate:	This GS28 antibody is un-conjugated
Application:	Western Blotting (WB)

Product Details

Immunogen:	GOSR1 antibody was raised in rabbit using the C terminal of GOSR1 as the immunogen
Purification:	Purified

Target Details

Target:	GS28 (GOSR1)
Alternative Name:	GOSR1 (GOSR1 Products)
Background:	This gene encodes a trafficking membrane protein which transports proteins among the endoplasmic reticulum and the Golgi and between Golgi compartments. This protein is considered an essential component of the Golgi SNAP receptor (SNARE) complex. Alternatively spliced transcript variants encoding distinct isoforms have been found for this gene. Synonyms: Polyclonal GOSR1 antibody, Anti-GOSR1 antibody, golgi SNAP receptor complex member 1

Target Details

antibody, GOLIM2 antibody, GOS-28 antibody, GOS28 antibody, GOS28/P28 antibody, GS28 antibody, P28 antibody.

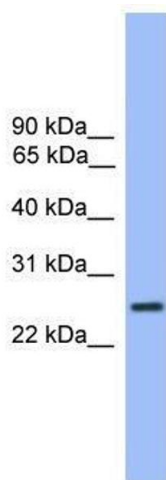
Application Details

Application Notes:	WB: 0.2-1 µg/mL Optimal conditions should be determined by the investigator.
Comment:	GOSR1 Blocking Peptide, catalog no. 33R-3986, is also available for use as a blocking control in assays to test for specificity of this GOSR1 antibody
Restrictions:	For Research Use only

Handling

Format:	Lyophilized
Concentration:	Lot specific
Buffer:	Lyophilized powder. Add 50 µL of distilled water. Final antibody concentration is 1 mg/mL in PBS buffer.
Handling Advice:	Avoid repeated freeze/thaw cycles.
Storage:	4 °C/-20 °C
Storage Comment:	Store at 4 °C, following reconstitution, aliquot and store at -20 °C.

Images



Western Blotting

Image 1. Western Blot showing GOSR1 antibody used at a concentration of 1-2 µg/ml to detect its target protein.