

Datasheet for ABIN929266

anti-Relaxin 3 Receptor 1 antibody (N-Term)[Go to Product page](#)**1** Image

Overview

| | |
|----------------------|---|
| Quantity: | 100 µL |
| Target: | Relaxin 3 Receptor 1 (RXFP3) |
| Binding Specificity: | N-Term |
| Reactivity: | Human |
| Host: | Rabbit |
| Clonality: | Polyclonal |
| Conjugate: | This Relaxin 3 Receptor 1 antibody is un-conjugated |
| Application: | Western Blotting (WB) |

Product Details

| | |
|---------------|--|
| Immunogen: | RXFP3 antibody was raised in rabbit using the N terminal of RXFP3 as the immunogen |
| Purification: | Purified |

Target Details

| | |
|-------------------|--|
| Target: | Relaxin 3 Receptor 1 (RXFP3) |
| Alternative Name: | RXFP3 (RXFP3 Products) |
| Background: | RXFP3 is the receptor for RNL3/relaxin-3. Binding of the ligand inhibit cAMP accumulation. Synonyms: Polyclonal RXFP3 antibody, Anti-RXFP3 antibody, relaxin/insulin-like family peptide receptor 3 antibody, GPCR135 antibody, MGC141998 antibody, MGC142000 antibody, RLN3R1 antibody, RXFPR3 antibody, SALPR antibody. |

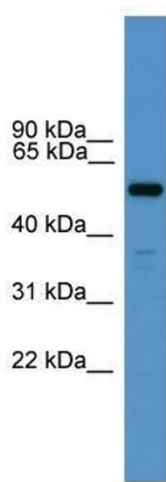
Application Details

| | |
|--------------------|--|
| Application Notes: | WB: 0.2-1 µg/mL Optimal conditions should be determined by the investigator. |
| Comment: | RXFP3 Blocking Peptide, catalog no. 33R-2547, is also available for use as a blocking control in assays to test for specificity of this RXFP3 antibody |
| Restrictions: | For Research Use only |

Handling

| | |
|------------------|--|
| Format: | Lyophilized |
| Concentration: | Lot specific |
| Buffer: | Lyophilized powder. Add 50 µL of distilled water. Final antibody concentration is 1 mg/mL in PBS buffer. |
| Handling Advice: | Avoid repeated freeze/thaw cycles. |
| Storage: | 4 °C/-20 °C |
| Storage Comment: | Store at 4 °C, following reconstitution, aliquot and store at -20 °C. |

Images



Western Blotting

Image 1. RXFP3 antibody used at 0.2-1 ug/ml to detect target protein.